



Delta Pyramax Engineering Ltd.

佳澤工程有限公司

DISCOVER THE
NEW DIMENSION
OF HEATING

Heat in the living room



Radiation
heating systems

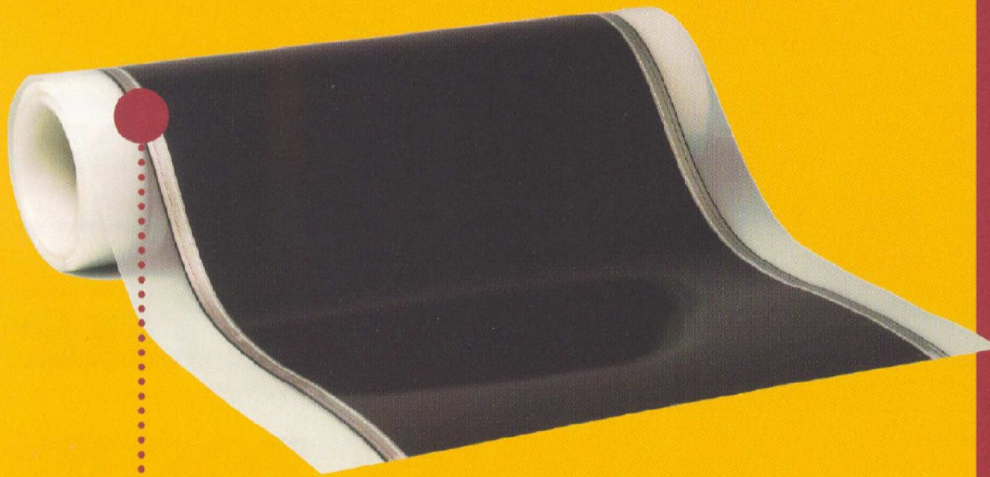
Low-temperature radiation heat

thermotex

for floors, walls and ceilings

Tel : 2511 2118 Fax : 2507 5078

heating foil



A new
heat
experience

THERMOTEX® electrical heating foil for ceilings, walls and floors

thermotex electrical heating foil

The THERMOTEX® heating foil consists of glass fabrics coated with electrically conducting "PTFE Carbon" plastic. Tin plated copper strips are sewn onto it as electrodes for power supply. The electrical insulation is obtained by lamination with high-quality polyester/polyethylene composite foil.

THERMOTEX® heating foils offer many advantages:

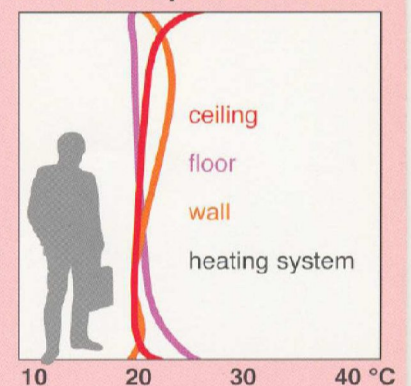
- Heat production in the whole area (wireless, "real" sheet heater)
- Optimum heat radiation of the "black body" PTFE carbon
- In standard design only 0.8 mm thin
- Heat radiation in biologically optimum range of 9–11µm
- Low thermal inertia by low mass
- Simple processing from the roll
- High-quality raw material guarantees long life
- ÖVE- and VDE-tested

Available forms of THERMOTEX® electrical heating foils:

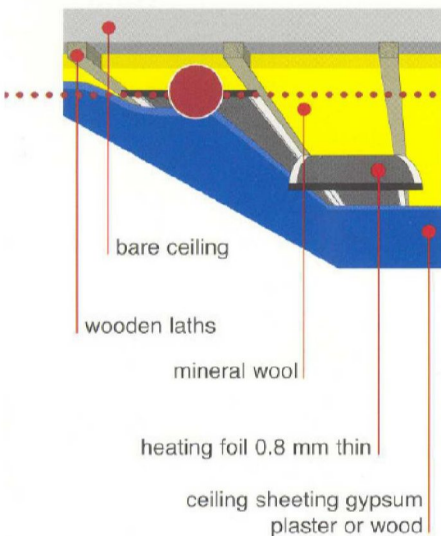
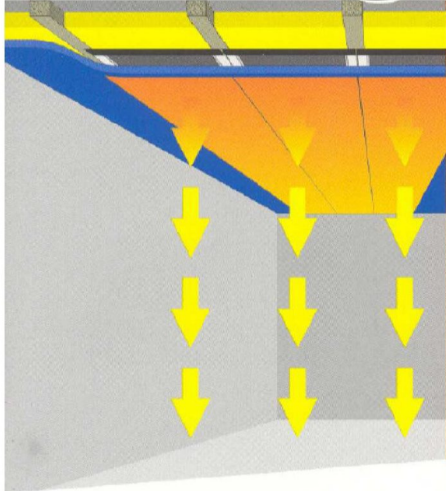
- **rolls** for ceiling, wall and floor heating in dry construction in standard widths of 40 and 60 cm: **type THB**
- **custom-made heating elements** in plastic-reinforced design for floor heating with concrete floor and carpet heating in standard widths of 40 and 60 cm: **type TVC**
- **special types** from 6 to 400 volts, widths range from 18 to 60 cm

- Low energy consumption
- Each room controlled separately by a thermostat
- No visible radiators
- No leakage or freezing in this heating system
- No maintenance, no service necessary
- No exhaust gas and soot
- Heating by radiation is reducing dust transport
- Easy to operate

Vertical temperature curve



Ceiling

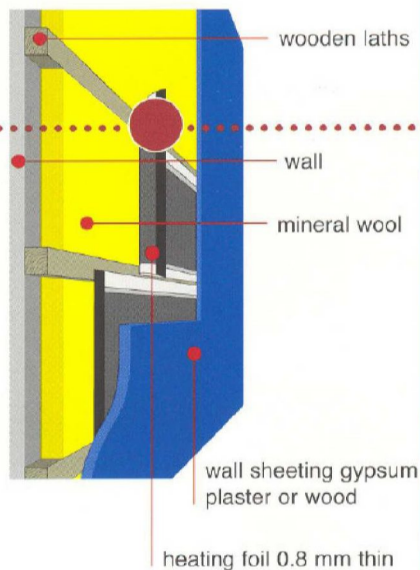
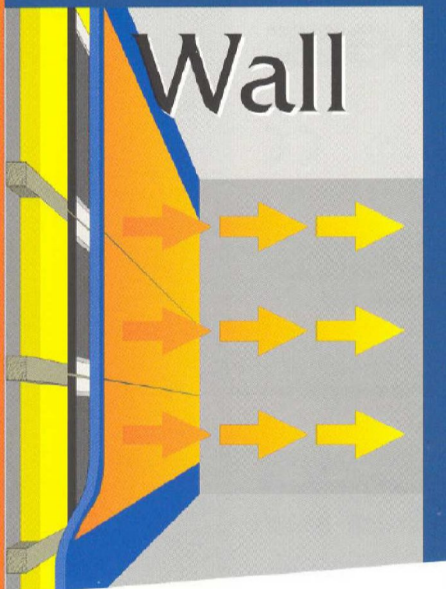


Since the ceiling is the largest uncovered area of the room, it is particularly suitable for radiant heating.

Heated up by the THERMOTEX® electrical heating foil to approx. 30 to 35 °C, the ceiling radiates heat in the form of mild infrared radiation with a wave length of 9–11 μm. Thus, the heat radiation of the ceiling corresponds to the **natural radiation** of humans. Due to the low thermal inertia of the system and the immediate effect of the heat rays, the **heating times are very short** and the controllability is excellent.

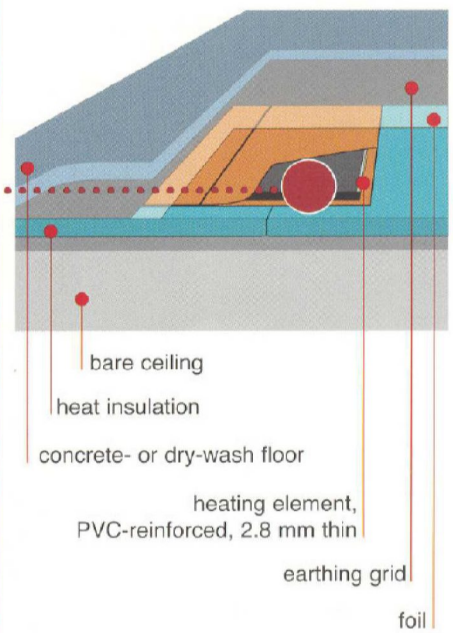
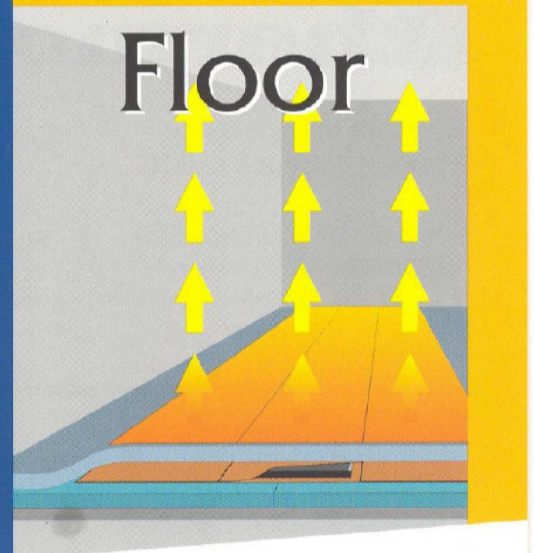
These properties and the possibility to control each room separately by means of a thermostat make this system a **top energy saver**. Gypsum plaster, wood, plastics or metal decoration boards may be used for the ceiling sheeting.

Wall



The heated wall, a proven heating principle, is realized with state-of-the-art technology – in **dry construction** and without any large mortising work for heating pipes. Therefore, this system is particularly suited for reconstruction of old houses. The heat dissipation over a large area at a low heating surface temperature facilitates optimum heating comfort with money-saving energy consumption. As with any other wall heating system, the THERMOTEX® heating wall must not be blocked by furniture and pictures may be fixed only in certain areas. Due to the low thermal inertia, the wall heating system responds quickly to temperature changes and **can be controlled easily and simply** via a room thermostat. Gypsum plaster boards or wood panelling can be used as wall sheeting.

Floor



The large-area, mild heating of the floor creates a **particularly comfortable ambience**.

Careful dimensioning of the heating capacity and the possibility to control the floor as well as the ambient temperature by means of a thermostat will lead to optimum heating comfort. This heating system option should be chosen particularly with ceramic floors. This applies specifically to bathrooms in houses with central heating, where foot-warm flooring is achieved with **minimum heating costs** without using the central heating system.

THERMOTEX® floor heating systems can be installed with concrete-wash floor, dry-wash floor or also with wooden floors and/or chip boards on joist boards.



Delta Pyramax Engineering Ltd.

佳澤工程有限公司

Tel : 2511 2118

Fax : 2507 5078

