



玻璃纖維 強化水泥製品

Glass Fibre Reinforced Cement Product

ONE OF THE MOST VERSATILE BUILDING MATERIALS AVAILABLE
TO ARCHITECTS AND ENGINEERS

公司簡介

COMPANY PROFILE

廣州永倫裝飾工程有限公司是北京永倫建材國際有限公司（北京是1994年8月在京成立）於2001年9月在廣州成立的全資港商獨資企業，為中國外商投資企業協會會員、國家新技術產業批准企業和中國玻璃纖維增強水泥（GRC）協會理事單位，現為中國大陸一家被CEMFIL國際有限公司認定的企業。現業務遍佈全國各地以及香港、澳門、台灣、新加坡和其他東南亞國家。

Guangzhou Yong Lun Decoration & Engineering Co., Ltd.

was founded by Bei Jing Yong Lun Building Materials International Co., Ltd. (founded in August, 1994) in September, 2001 as wholly Hong Kong-owned enterprise, a member of China Association of Enterprises with Foreign Investment, New Technology Enterprises in National High Technology, council member of China GRC Association and as the one of CEMFIL International Limited recognized enterprise in Mainland China. We serve customers throughout China, Hong Kong, Macau, Taiwan, Singapore and other South East Asia countries.



優點

ADVANTAGES

纖維水泥製品的(優點)

- 可塑性高
- 輕重量製品
- 多種表面效果
- 具優良抗紫外光及氣候性能

給您最佳答案

- 耐用產品
- 優美外牆及園林景色
- 優良環境及氣候適應性
- 降低建築及工程上的負荷
- 能達到低成本及優質預製產品

(ADVANTAGES) OF GRC

- High moldability
- Light weight
- Various tactile and texture qualities
- Excellent in UV and weather resistance

BEST SOLUTION

- Durable
- Aesthetic design in fascia and landscaping
- High adaptability for climate and environment
- Reduce dead load in building and engineering works
- Achieving Low cost, high quality pre-fab batch production



寶成裕元酒店 (Windsor Hotel)

欄柵及園林假山

Railing, Balustrade, Landscaping And Rockery

玻璃纖維增強水泥(GRC或者GFRC) 是一種纖維增強水泥。GRC通常用於建築預製混凝土作為大廈外牆面板。GRC的特質是容易製造,降低成本,適合任何外牆及密度比鋼低。

GRC面板的設計來自於基本材料性質的知識; 拉伸, 壓縮, 彎曲及剪切動力。也包括蔓延, 熱力及濕氣的影響。

GRC建築面板擁有預製混凝土的外觀但性質有很大的分別。例如, 由於GRC面板的厚度比較薄, 所以GRC面板的平均重量比預製混凝土面板輕。GRC面板比較輕, 疊加在建築結構的負載明顯減少。建築物的結構變得更加經濟。

GlassFibre Reinforced Concrete (GRC also known as GFRC) is a type of fibre reinforced concrete. GRC are mainly used in exterior building façade panels and as architectural precast concrete. This material is very good in making shapes on the front of any building and it is less dense than steel.

The design of GRC panels proceeds from a knowledge of its basic properties under tensile, compressive, bending and shear forces, coupled with estimates of behavior under secondary loading effects such as creep, thermal and moisture movement.

Glass fiber reinforced concrete architectural panels have general appearance of pre-cast concrete panels, but are different in several significant ways. For example, GRC panels will, on the average, weigh substantially less than pre-cast concrete panels due to their reduced thickness. The low weight of GRC panels decrease superimposed loads on the building's structural components. The building frame becomes more economical.







DECORATIVE
CLADDING

包柱及裝飾

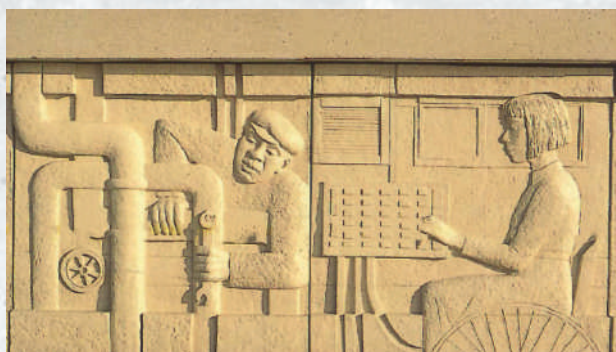


花盆 花杯

PLANTER



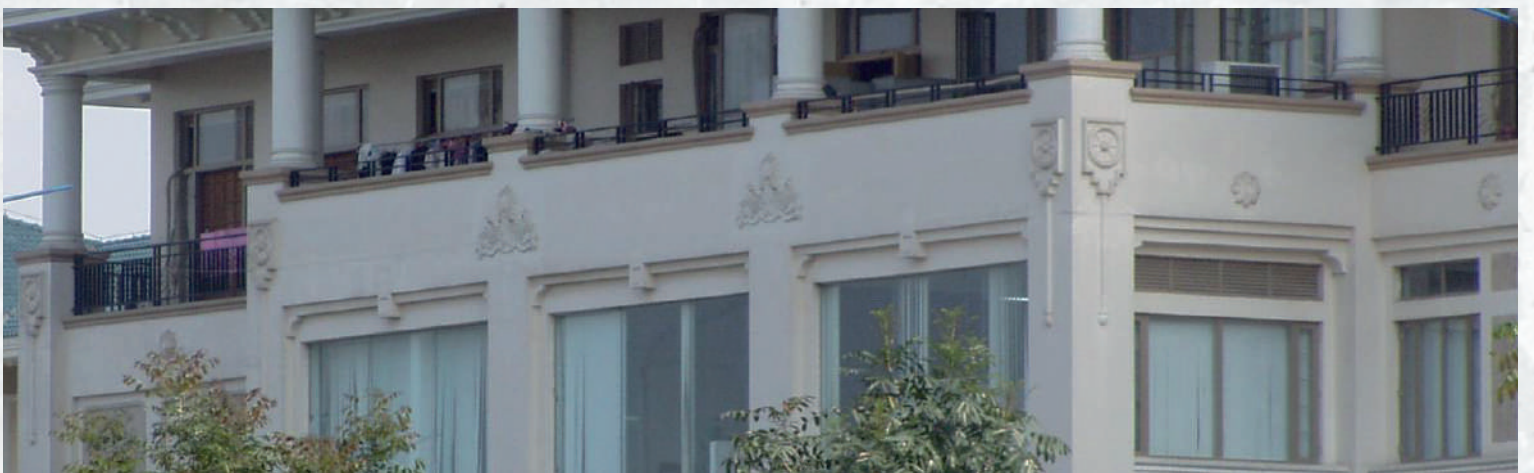
浮彫製品
SCULPTING



外牆粉飾

FASCIA DESIGN





產品性能

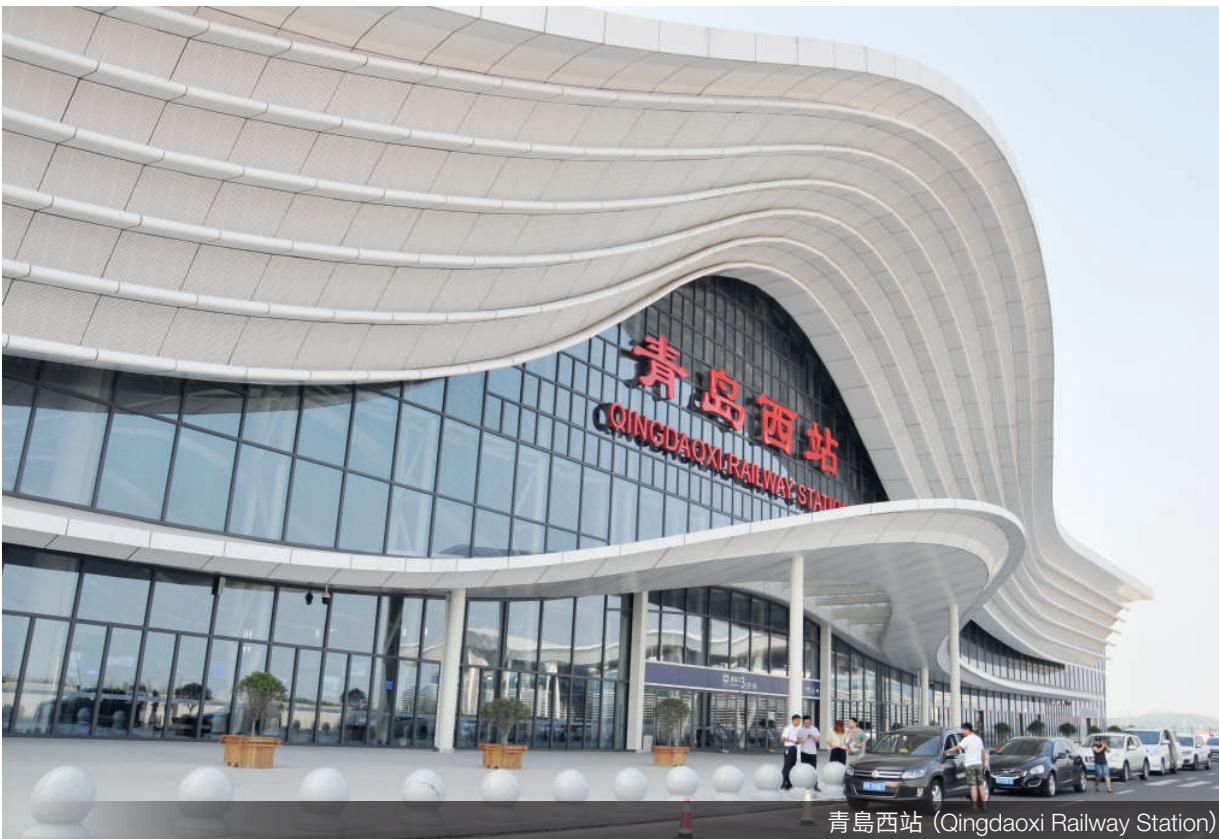
CHARACTERISTICS

CHARACTERISTICS 性能	UNIT 單位	SPRAY METHOD 人工噴法
抗壓強度 Compressive strength	MPa	50 - 80
拉力強度 Tensile strength	MPa	5 - 7
彎曲強度 Bending strength	MPa	7 - 11
剪應力強度 Shear strength		
水平面 In-plane	MPa	5.5
層間 Interlaminar	MPa	4
膨脹系數 Coefficient of expansion		耐凍熔性能 20X10 ⁻⁶ /°C Freeze-thaw resistance
濕度 Moisture		不透水, 少量透氣 Liquid-water impermeable. Low water-vapour permeance
耐火性 Fire property		不易燃 Non-combustible
疲勞強度 Fatigue strength		1千萬之負載週期後 (在正常工作應力範圍下) Greater than 10 million cycles at normal stress level
降噪 Noise reduction	dBA	30 dBA
乾密度 Dry density	kg/m ³	1800-2000

PROPERTY 屬性	UNIT 單位	SPRAY METHOD 人工噴法
模數 Modulus	kg/m ³	25
衝擊強度 Impact strength	kJ/m ²	4
泊松比 Poisson's Ratio	kg/m ³	0.24
LOP	MPa	10
MOR	MPa	13
BOP	MPa	5.5
UTS	MPa	5.5
Strain to failure	%	0.04



廣州 珊瑚灣會所(Cape Coral)



青島西站 (Qingdaoxi Railway Station)

工程案例

PROJECT REFERENCE



本公司一直在香港及中國大陸為不同公司進行GRC工程項目,現時科技發達在建築工程上也有很大的進步例如在外觀設計方面開始使用很多的曲線設計,在這方面GRC可以配合不同設計的需要完美表現出來。在這方面本公司進行過很多不同的工程案例如:“青島西站”的曲線設計樓頂。

Our company has GRC project co-operations with Hong Kong and mainland China. Nowadays the technology develops improvement many architecture trends to curvaceous design. In this case, your design could perfectly be performed by GRC. These photos are our GRC project references e.g. the curvaceous rooftop of “Qingdaoxi Railway Station”.

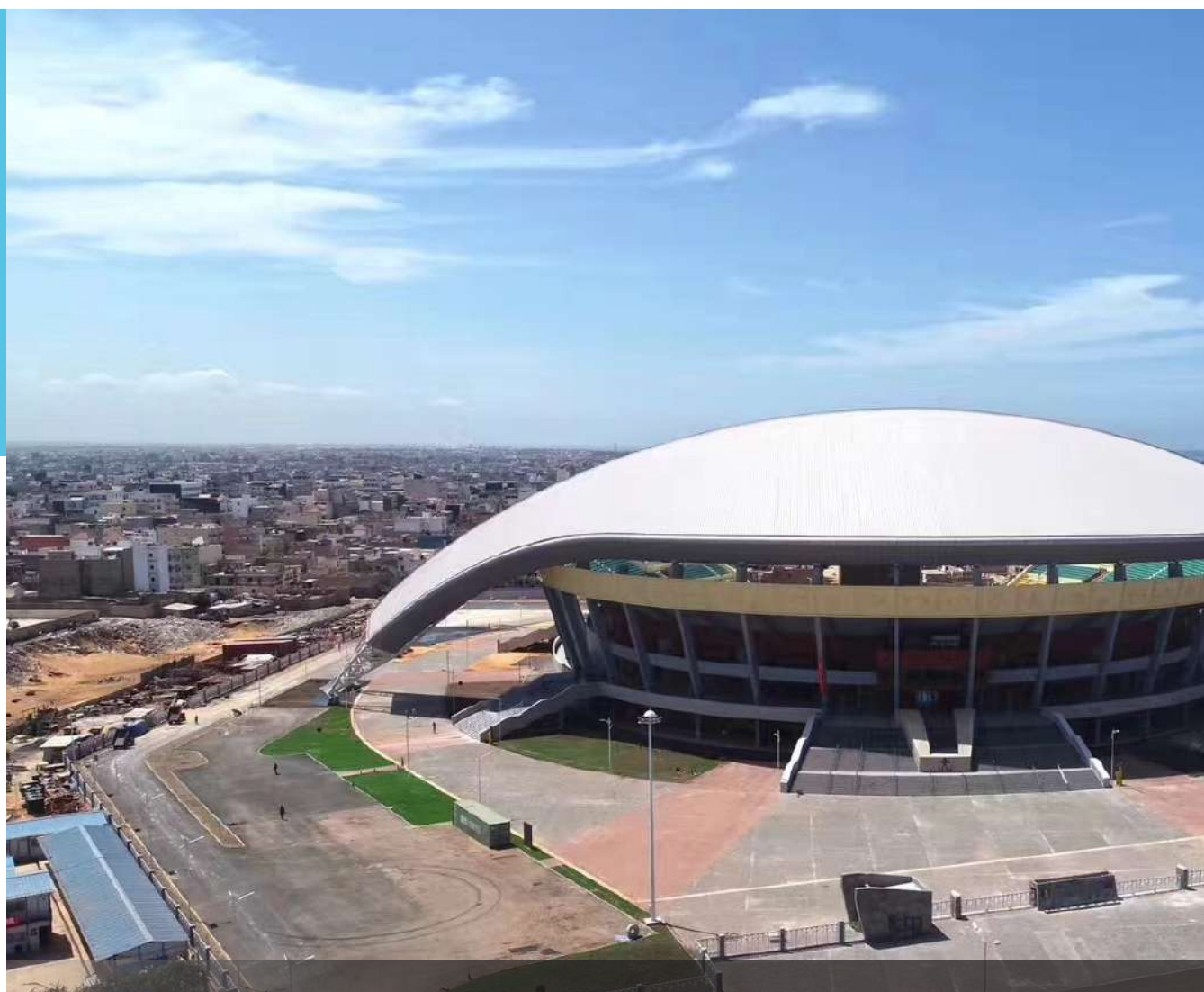
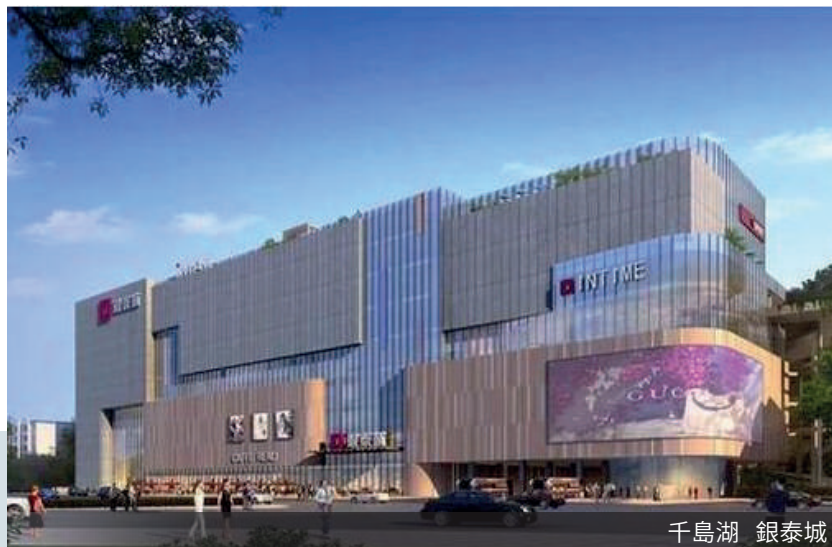


東莞 中升雷克薩斯店 (LEXUS China)



香港 皇府山 (NobleHill)

工程案例





佛山 維尚家居 (WISION)



塞內加爾 競技摔交場

廣州永倫裝飾工程有限公司

Guangzhou Yong Lun Decoration & Engineering Co.,Ltd.

韓量經理：13928908886 座機：020-84919071

微信/QQ：846656387

佳澤工程有限公司

Delta Pyramax Engineering Ltd.

Tel: 852-25112118 Fax: 852-25075078

Email: sales@dpx.hk

Website: www.deltapyramax.com

如需更多資訊，請瀏覽以下網站：

For more product information, please visit our websites:

www.grc.com.hk

www.yonglungrc.com