

GOODRICH SOLUTIONS
WALLCOVERING
237 | **GARNET**



Goodrich Global
SINCE 1983

FABRIC BACK VINYL TYPE II

PREMIERWALL



*We've got you
Covered!*

PREMIERWALL
2022 - 2025.12

COMMERCIAL | HOSPITALITY | RESIDENTIAL





PREMIERWALL GARNET LOW VOC

50 - 54" Fabric-Backed Contract Wallcovering

PHYSICAL PROPERTIES

Weight(avg) 20 oz. PLY / 620G/PLM
Roll Size 50/54" x 30yds
Backing Osnaburg / Non Woven
Meets or exceeds Federal Specification CCC-W-408D for Type II Wallcovering

FIRE SAFETY

- Class "A" fire rated - tested in accordance with ASTM E-84 Tunnel test
- Flame spread: 25 / Smoke developed: 45
- Passes NFPA 286 Corner Burn Test

ENVIRONMENT AND HEALTH

- The product has been assessed according to the assessment criteria of the Singapore Green Building product certification scheme.
- Meets California section 01350 IAQ test requirements for wallcovering
- Can contribute to LEED EQ 4.1 point for low-emitting materials, adhesives, and sealants, if used with low VOC adhesives
- Can contribute to LEED MR 5.1 point for regional materials



ANTI-MICROBIAL FEATURES

PREMIERWALL GARNET can be perforated, with 30 yard minimum requirement, for enhanced permeability. This product is intended for use in buildings that are properly designed and maintained to avoid moisture infiltration, condensation and/or accumulation at wall cavities and wall surfaces, particularly in warm, humid climates. Goodrich wallcoverings contain anti-microbial additives to resist the growth of mildew and bacteria and pass ASTM G-21. These additives will not prevent mold growth if residual wall moisture is in excess of 4% and/or is allowed to accumulate in or behind the walls.

BATCHING

Since slight variation in shading may occur time to time, it is important that the roll carrying the same batch number be used in any one area.

ORIGIN

USA



PWG0108 Aged Cedar



SPECIFICATIONS & PROPERTIES

Weight: 20 oz. PLY/620 G/PLM 13.3 oz. PSY/451 G/PSM
Width: 54" (137cm)
Backing: Osnaburg
Match: Reverse / Random

Custom colors, weights, widths and microventing are available.

ENVIRONMENTAL & HEALTH

- Low VOC, California section 01350 IAQ
- 10% Recycled content
- Non-Phthalate
- NSF/ANSI 342 certified
- EPD/HPD
- California Prop 65, no labeling required



PWG0101 Sunbleached



PWG0102 Beech



PWG0103 Weathered Willow



PWG0104 Maple



PWG0105 Sycamore



PWG0106 Ashwood



PWG0107 Antique Chestnut



PWG0108 Aged Cedar



PWG0115 Walnut



PWG0109 Oak



PWG0110 Mesquita



PWG0111 Elm



PWG0112 Mahogany



PWG0113 Teak



PWG0114 Kona



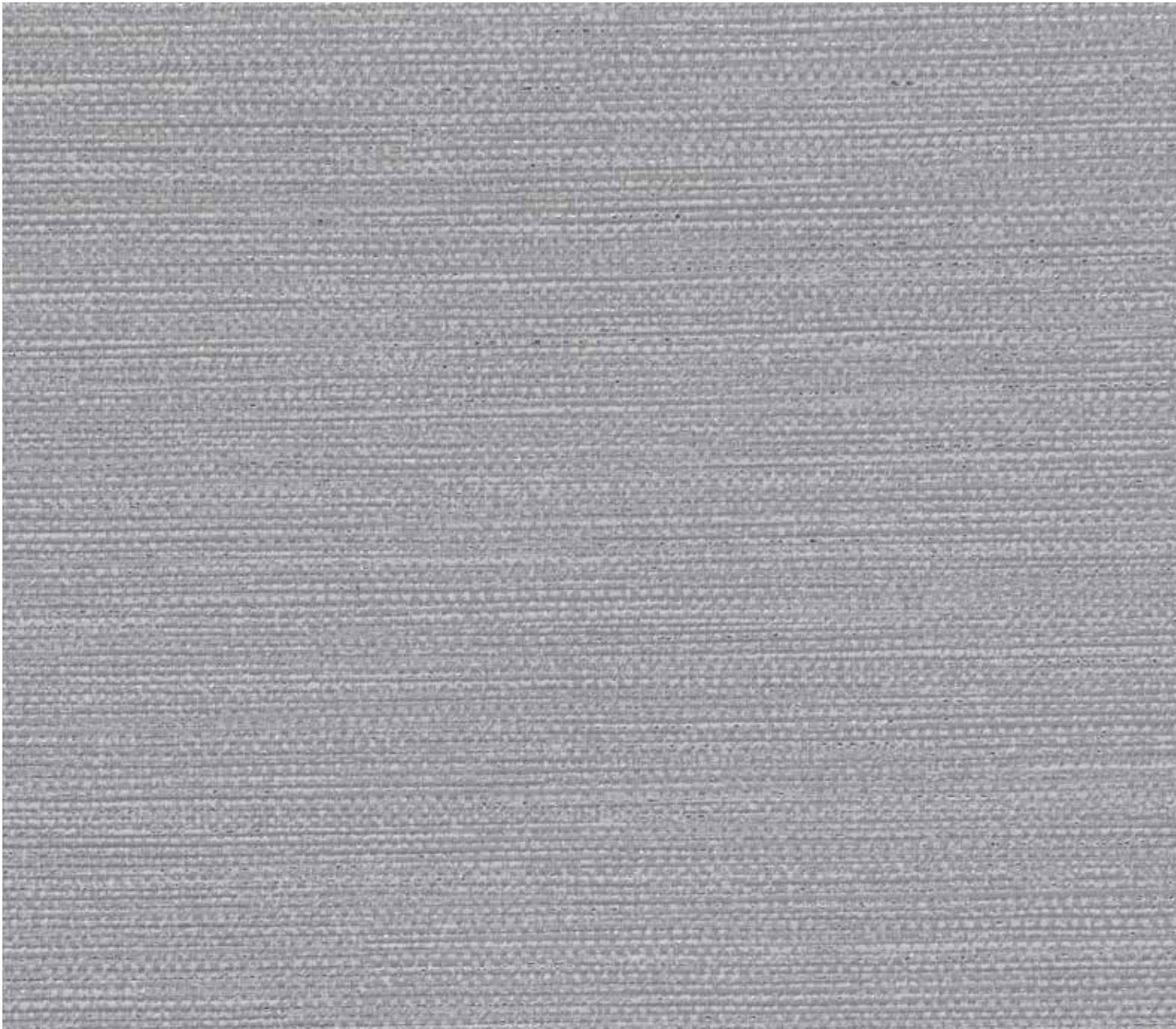
PWG0115 Walnut



PWG0116 Wenge

MAKE IT MYLAR

PWG0208 Grey Lame



SPECIFICATIONS & PROPERTIES

Weight: 20 oz. PLY/620 G/PLM 13.3 oz. PSY/451 G/PSM
Width: 50" (127cm)
Backing: Osnaburg
Match: Reverse / Random

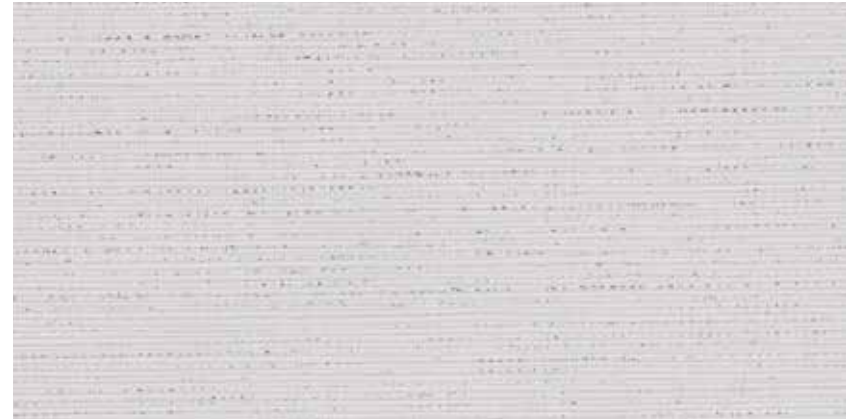
Custom colors, weights, widths and microventing are available.

ENVIRONMENTAL & HEALTH

- 10% recycled content (varied blend of pre-consumer and remanufactured material)
- Certified to NSF/ANSI 342 Sustainability Assessment
- Meets California Section 01350 IAQ test requirements for wallcovering
- Can contribute to LEED EQ 4.1 for low-emitting materials, adhesives, and sealants, if used the low VOC adhesives
- Can contribute to LEED MR 5.1 for regional materials



PWG0201 Crystalline Cream



PWG0202 White Ice



PWG0203 Very Snappy



PWG0204 Gold Frost



PWG0205 Gilded



PWG0206 Dime Shine



PWG0207C Taupe Twinkle



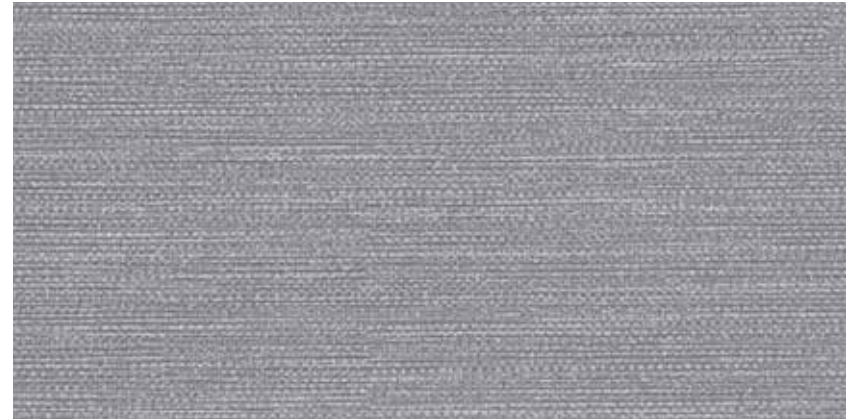
PWG0208 Grey Lame

PWG0214 Navy Sparkler





PWG0209 Polished Plum



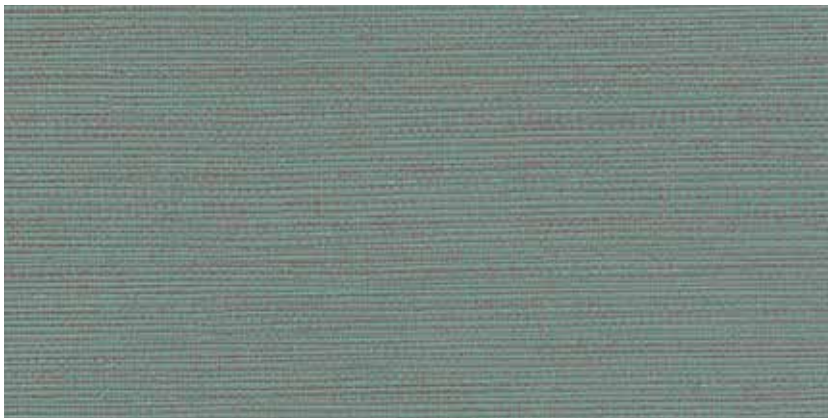
PWG0210 Silver Shimmer



PWG0211 Rockin Rose



PWG0212 Slick Spats



PWG0213 Dazzle Jade



PWG0214 Navy Sparkler

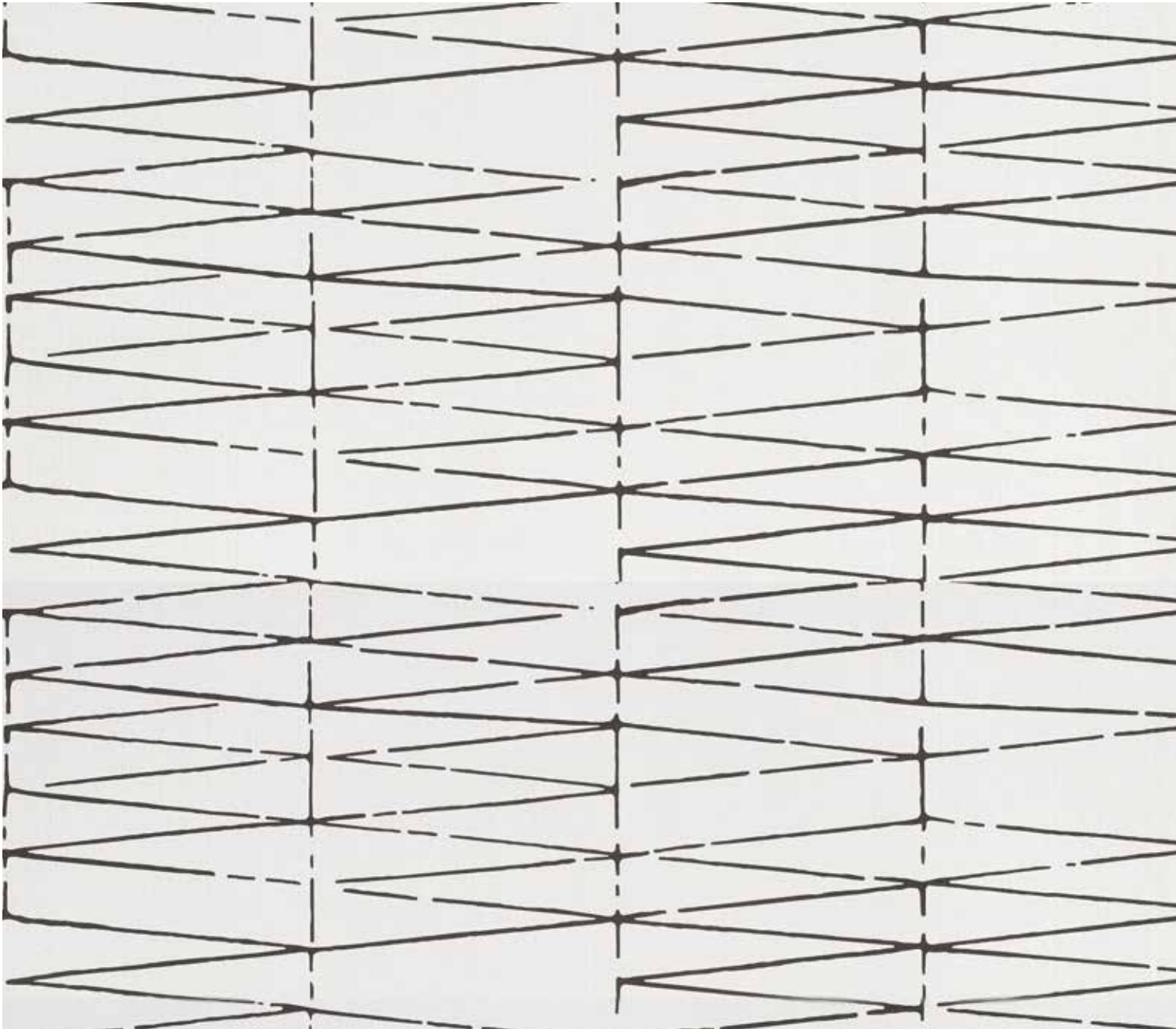


PWG0215 Blue Bling



PWG0216 Top Haute

PWG0301 Spot Lights



SPECIFICATIONS & PROPERTIES

Weight:	20 oz. PLY/620 G/PLM 13.3 oz. PSY/451 G/PSM
Width:	52" (132cm)
Backing:	Non-woven
Match:	Straight
Pattern Repeat:	18" h x 52" w

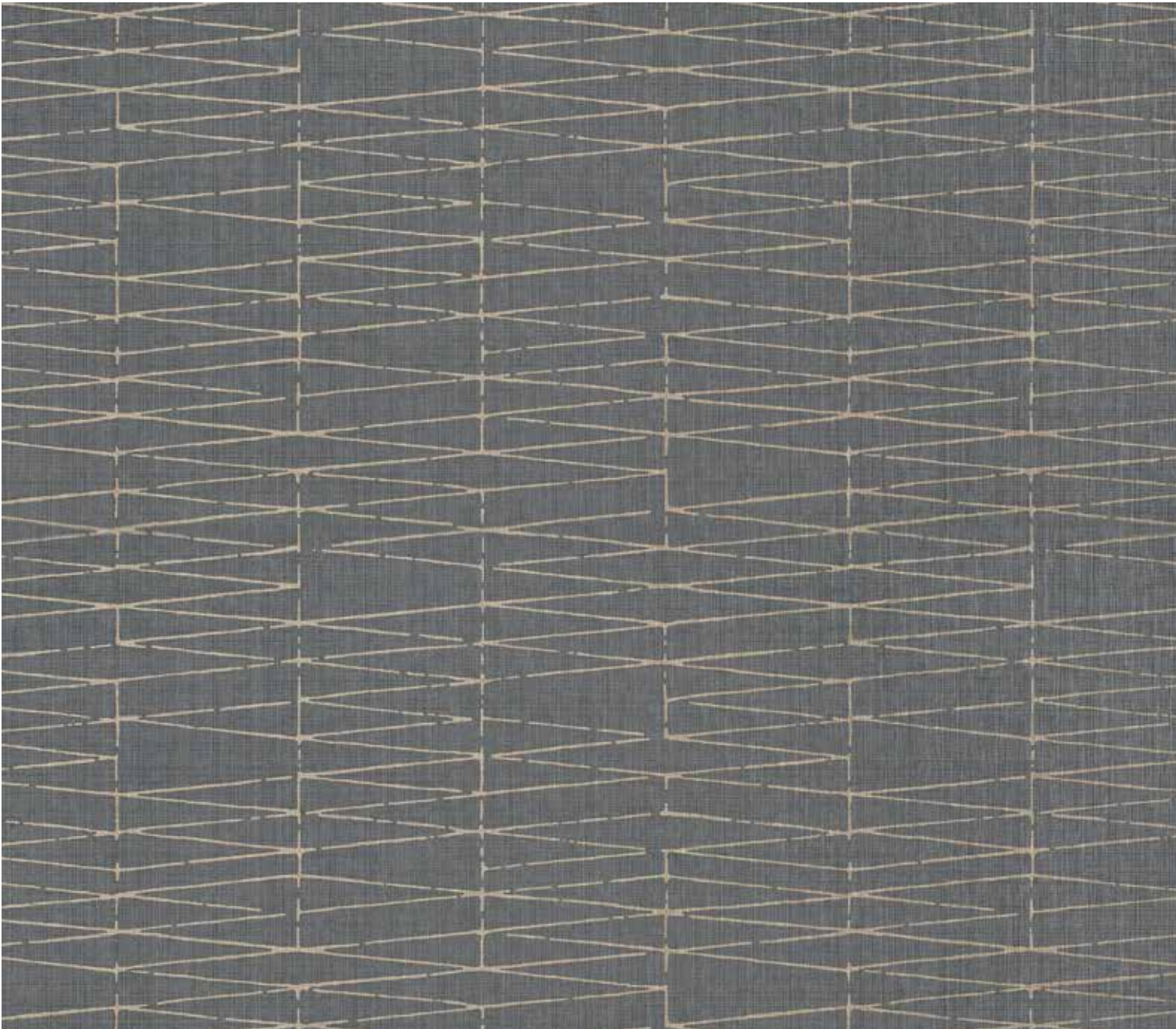
Custom colors, weights, widths and microventing are available.



PWG0301 Spot Lights

ON POINTE PETITE

PWG0406 Classical Charcoal



SPECIFICATIONS & PROPERTIES

Weight:	20 oz. PLY/620 G/PLM 13.3 oz. PSY/451 G/PSM
Width:	52" (132cm)
Backing:	Non-woven
Match:	Straight
Pattern Repeat:	18" h x 26" w

Custom colors, weights, widths and microventing are available.



PWG0401 White Lights



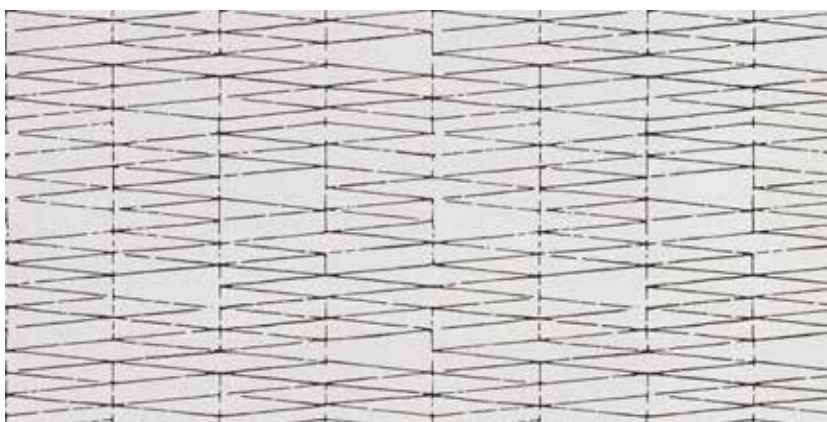
PWG0402 Chiffon Tutu



PWG0403 Dusk Duet



PWG0404 Silver Song



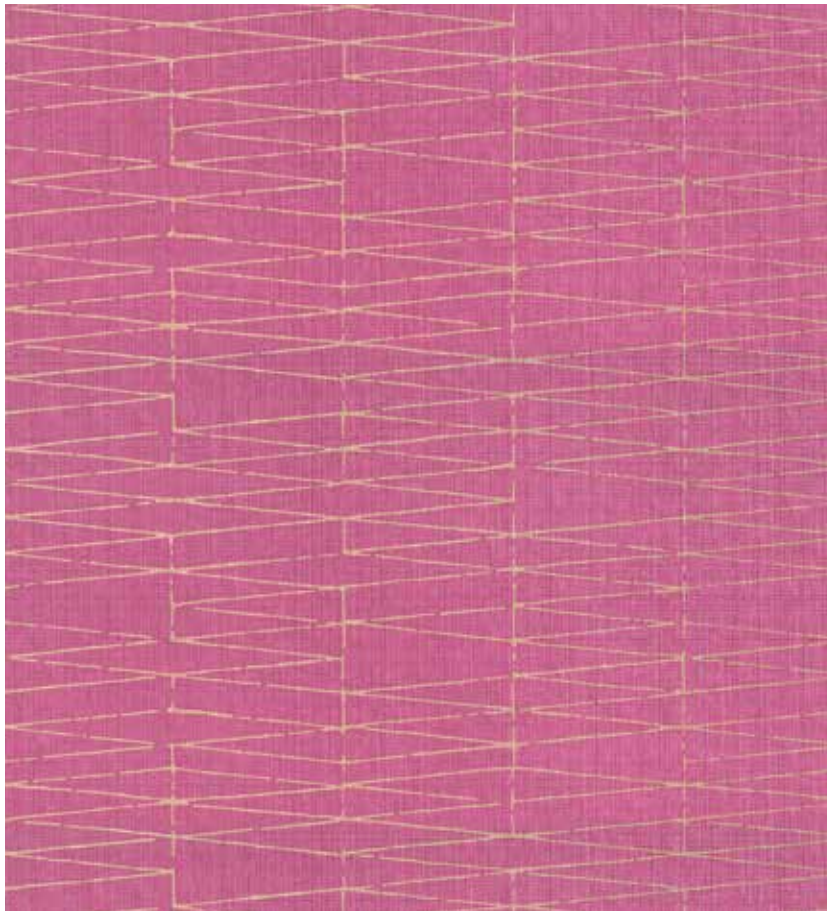
PWG0405 Lights Out



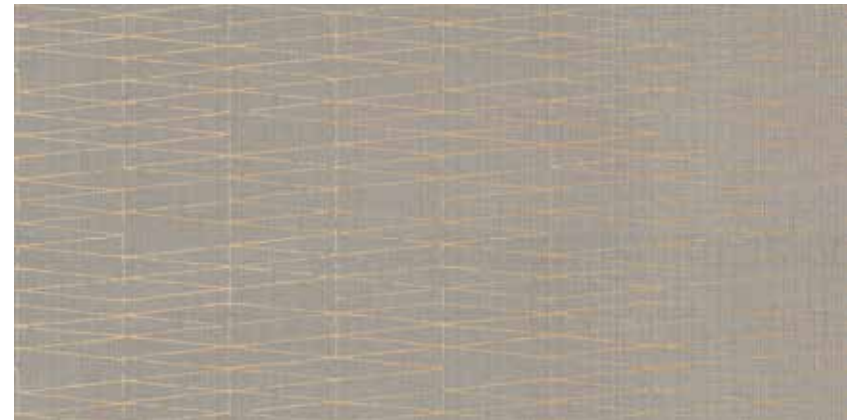
PWG0406 Classical Charcoal



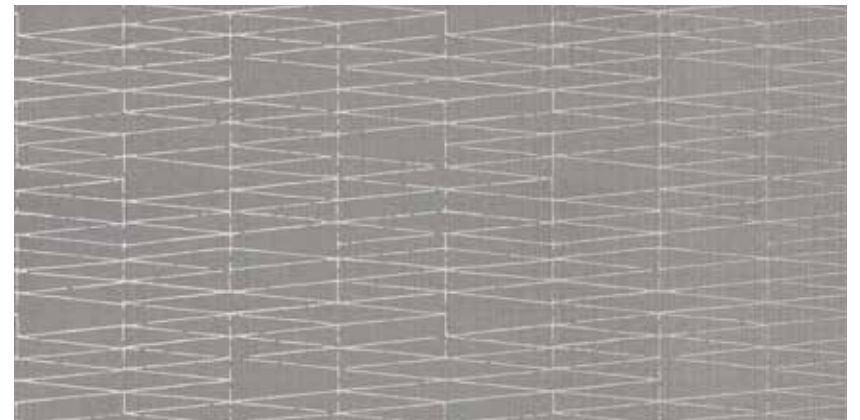
PWG0408 On Tour Taupe



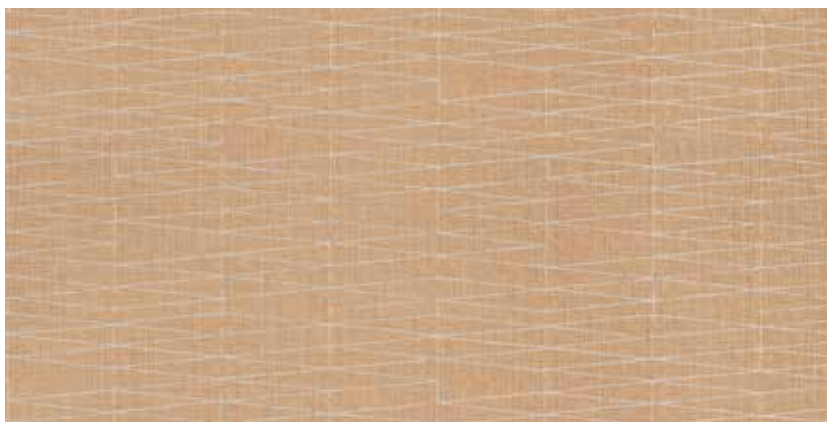
PWG0407 Pink Headliner



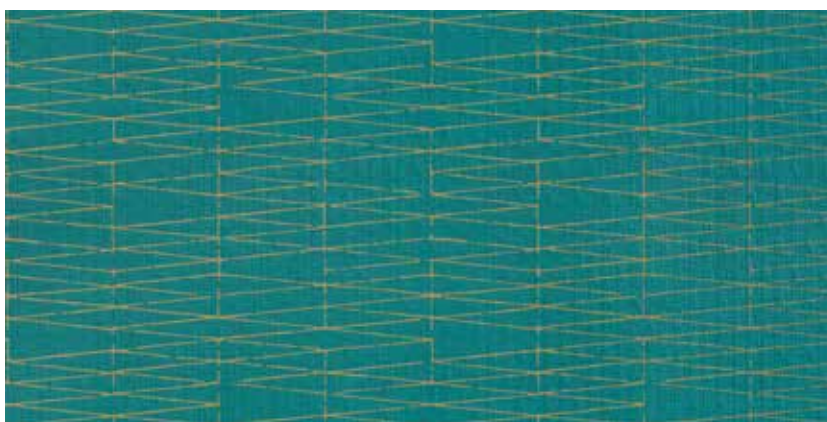
PWG0408 On Tour Taupe



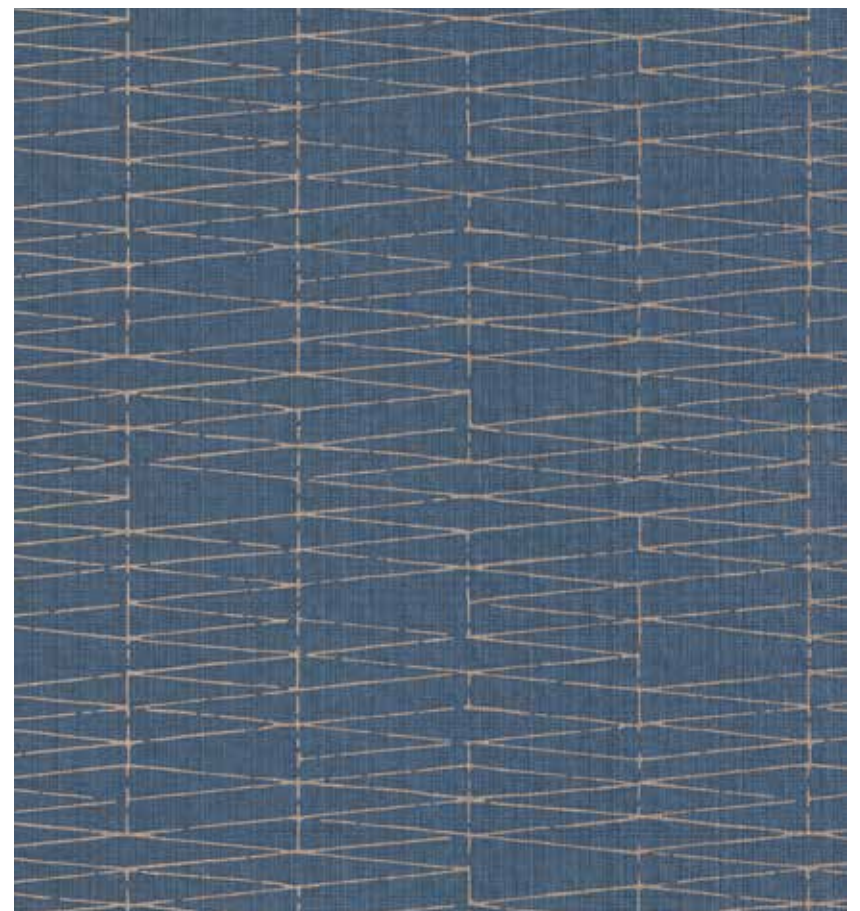
PWG0409 Moondance



PWG0410 Box Office Bronze



PWG0411 Superstar Teal



PWG0412 Sapphire Solo

SHAPE SHIFT

PWG0506 Mixed Moods



SPECIFICATIONS & PROPERTIES

Weight: 20 oz. PLY/620 G/PLM 13.3 oz. PSY/451 G/PSM
Width: 52" (132cm)
Backing: Osnaburg
Match: Straight random
Pattern Repeat: 24" h x 52" w

Custom colors, weights, widths and microventing are available.



PWG0502 Neutral Grounds



PWG0501 Icy Intersection



PWG0502 Neutral Grounds



PWG0503 Shark Skin



PWG0504 Sage Advice



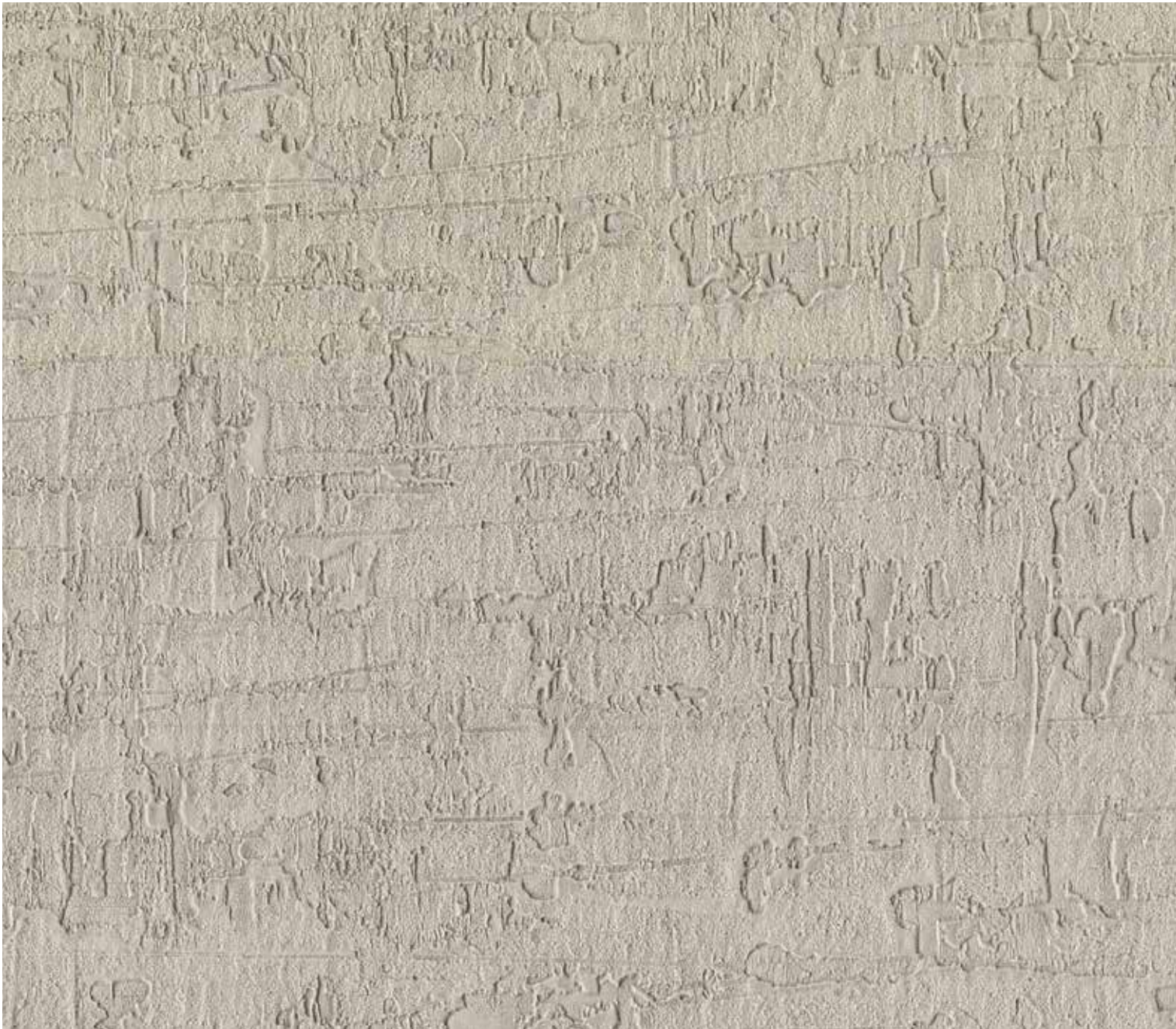
PWG0505 Locus Pink



PWG0506 Mixed Moods

PLASTER PRELUDE

PWG0604 Stone Solo



SPECIFICATIONS & PROPERTIES

Weight: 20 oz. PLY/620 G/PLM 13.3 oz. PSY/451 G/PSM
Width: 52" (137cm)
Backing: Osnaburg
Match: Reverse / Random

Custom colors, weights, widths and microventing are available.

ENVIRONMENTAL & HEALTH

- Low VOC, California section 01350 IAQ
- 10% Recycled content
- Non-Phthalate
- NSF/ANSI 342 certified
- EPD/HPD
- California Prop 65, no labeling required



PWG0601 Play The Bones



PWG0602 Pebble Pitch



PWG0603 Grey Scale



PWG0604 Stone Solo



PWG0605 Blue Harmony



PWG0606 Taupe Tones



PWG0607 Mushroom March



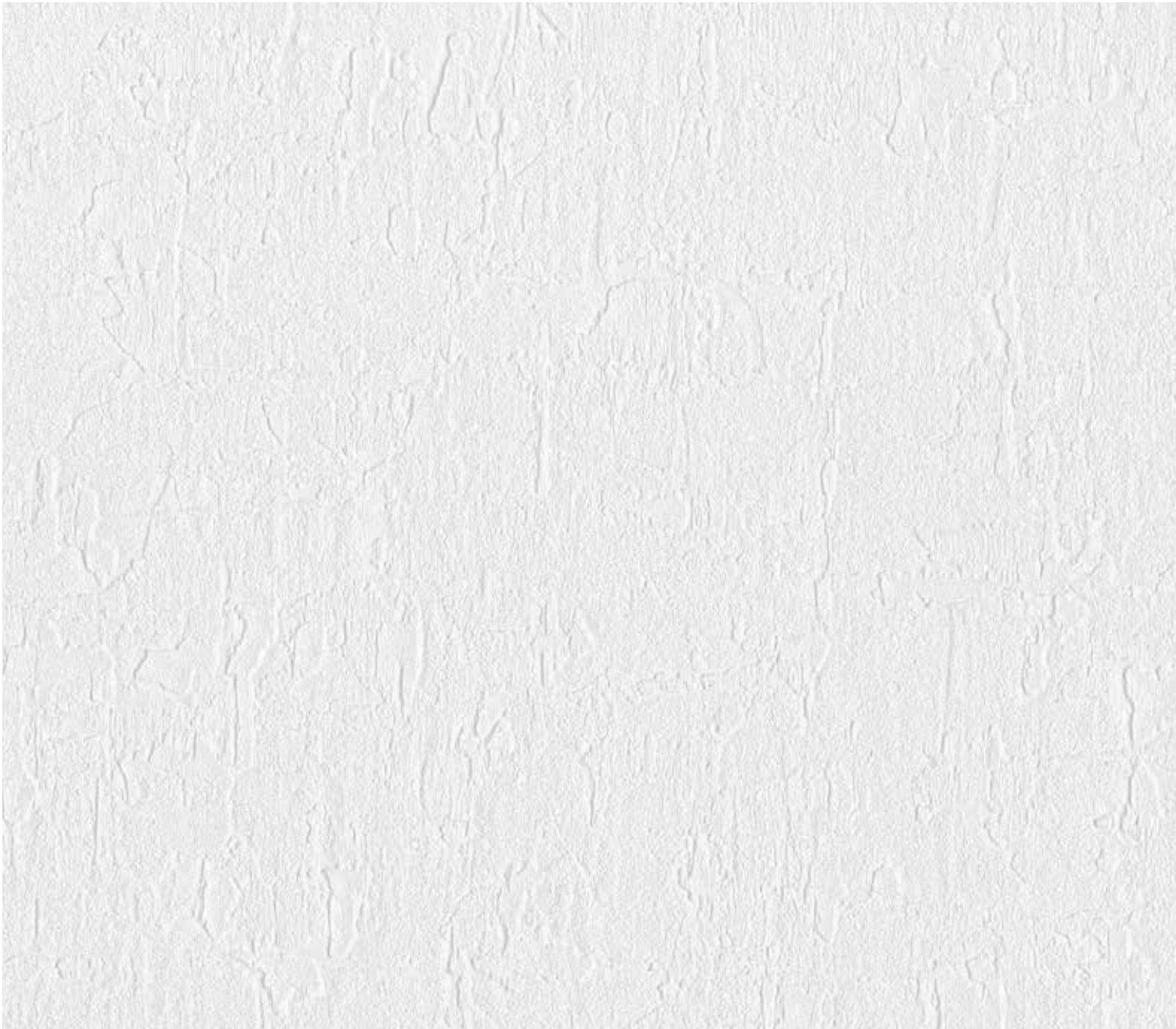
PWG0608 Black Ballad



PWG0603 Grey Scale

PLASTER PRIMO

PWG0708 Jazzy Pearl



SPECIFICATIONS & PROPERTIES

Weight: 20 oz. PLY/620 G/PLM 13.3 oz. PSY/451 G/PSM
Width: 54" (137cm)
Backing: Osnaburg
Match: Reverse / Random

Custom colors, weights, widths and microventing are available.

ENVIRONMENTAL & HEALTH

- Low VOC, California section 01350 IAQ
- 10% Recycled content
- Non-Phthalate
- NSF/ANSI 342 certified
- EPD/HPD
- California Prop 65, no labeling required



PWG0701 Burgundy Tone



PWG0702 Deep Teal Tempo



PWG0703 Antique Brass



PWG0704 Cue Graphite



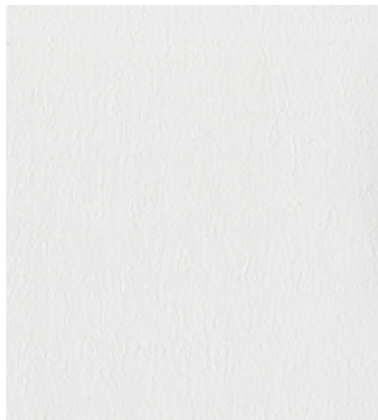
PWG0705 Golden Keys



PWG0706 Silver Serenade



PWG0707 Creamy Chords



PWG0708 Jazzy Pearl



PWG0706 Silver Serenade

PWG0812 Caramelized



SPECIFICATIONS & PROPERTIES

Weight:	20 oz. PLY/620 G/PLM 13.3 oz. PSY/451 G/PSM
Width:	54" (137cm)
Backing:	Osnaburg
Match:	Reverse / Random

Custom colors, weights, widths and microventing are available.

ENVIRONMENTAL & HEALTH

- Low VOC, California section 01350 IAQ
- 10% Recycled content
- Non-Phthalate
- NSF/ANSI 342 certified
- EPD/HPD
- California Prop 65, no labeling required



PWG0801 Perfect White



PWG0802 Grey Pearl



PWG0803 Baby's Breath



PWG0804 Bone



PWG0805 Cashmere



PWG0806 Touch Of Tan



PWG0807 Cream



PWG0808 Mushroom



PWG0809 Gardenia



PWG0810 Golden



PWG0811 Dusty Trail



PWG0812 Caramelized

PWG0820 Clam Up





PWG0813 Cranberry



PWG0814 Moonstruck



PWG0815 Blushing Rose



PWG0816 Copper Tine



PWG0817 Stone Mason



PWG0818 Carbon Dating



PWG0819 Oasis



PWG0820 Clam Up



PWG0821 Evergreen



PWG0822 Bluebird

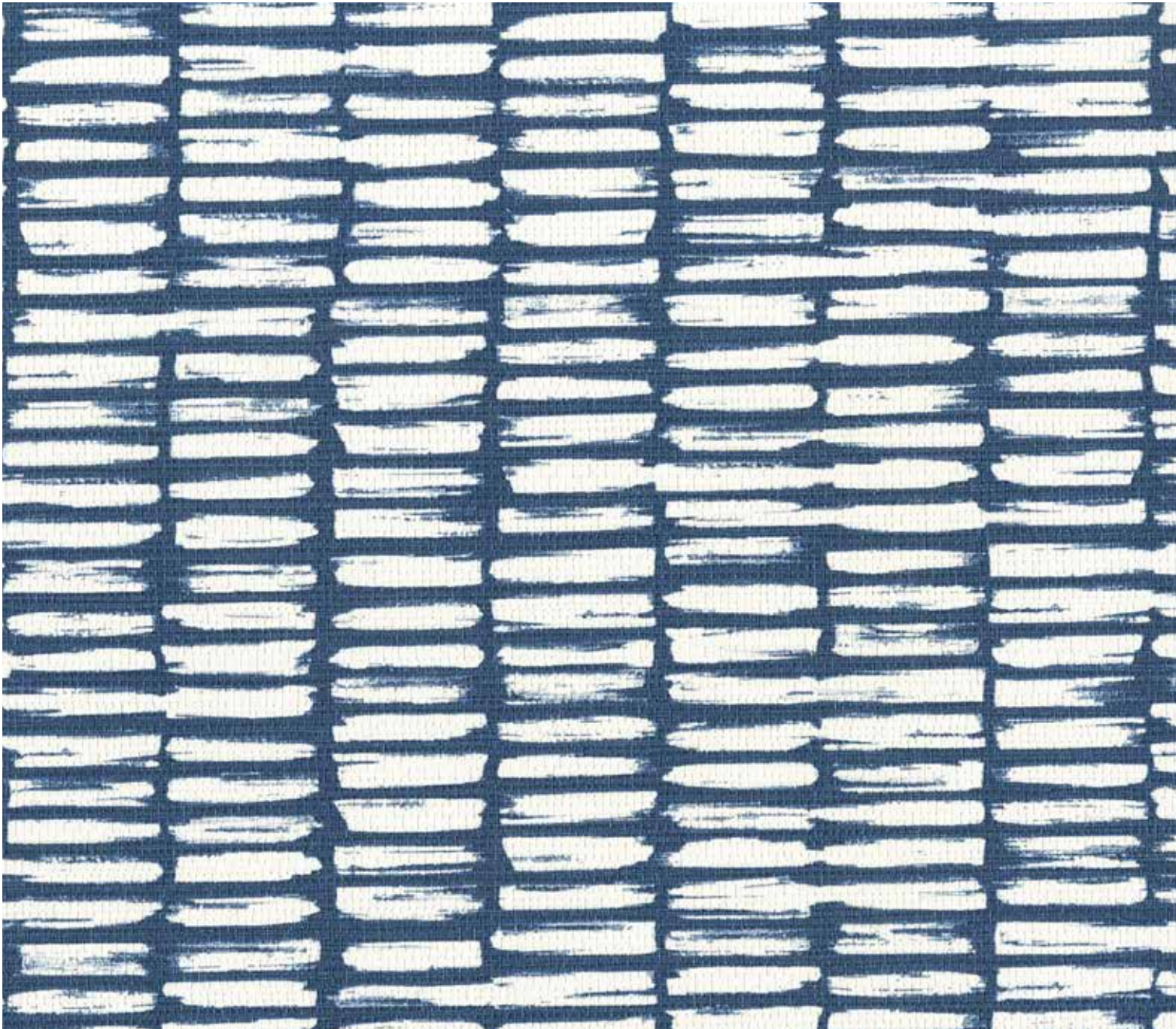


PWG0823 Dark Lagoon



PWG0824 Midnight

PWG0918 Navy



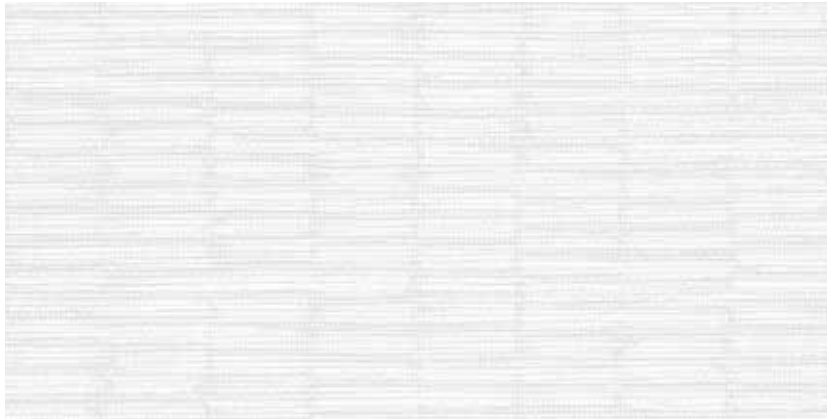
SPECIFICATIONS & PROPERTIES

Weight: 20 oz. PLY/620 G/PLM 13.3 oz. PSY/451 G/PSM
Width: 52" (132cm)
Backing: Osnaburg
Match: Reverse
Pattern Repeat: 18" h x 52" w.

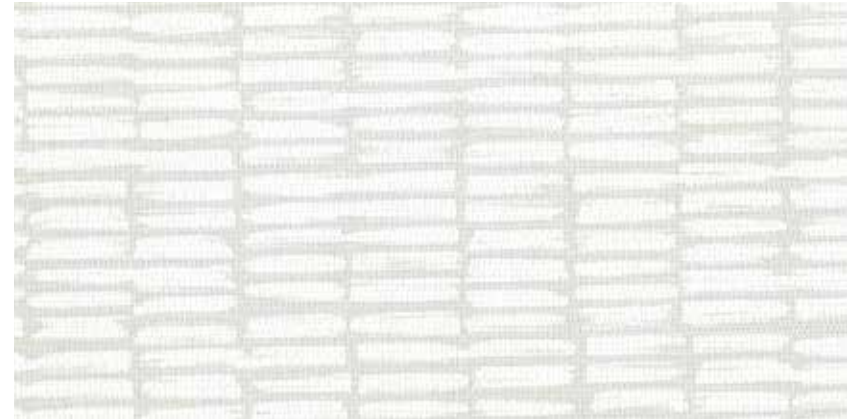
Custom colors, weights, widths and microventing are available.

ENVIRONMENTAL & HEALTH

- Low VOC, California section 01350 IAQ
- 10% Recycled content
- Non-Phthalate
- NSF/ANSI 342 certified
- EPD/HPD
- California Prop 65, no labeling required



PWG0901 White-Out



PWG0902 Soft Sky



PWG0903 Creamy



PWG0904 Neutral



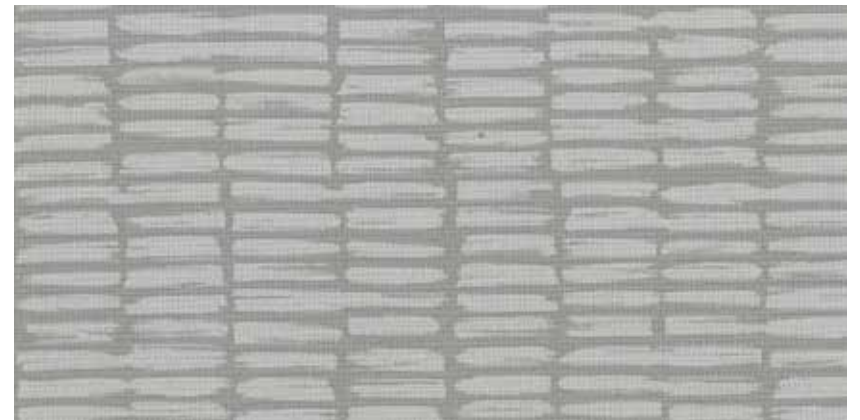
PWG0905 Beige



PWG0906 Warm Nickel



PWG0907 Pale Silver



PWG0908 Charcoal



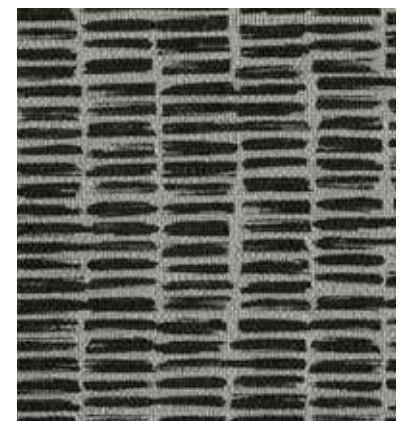
PWG0909 Taupe



PWG0910 Burnished Gold



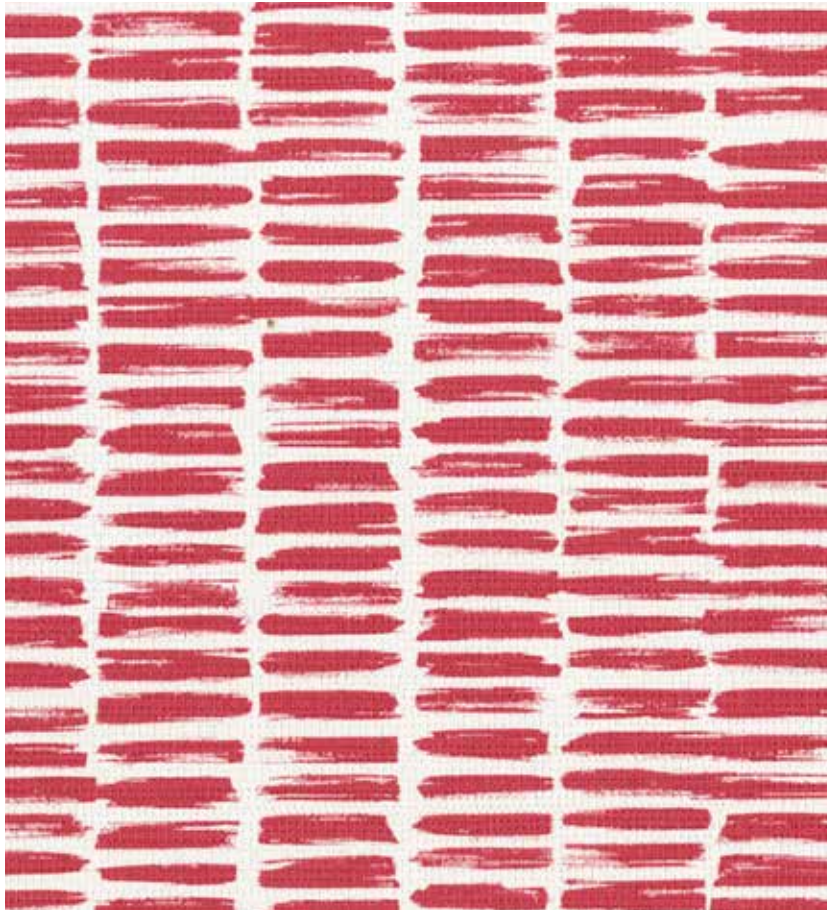
PWG0911 Black & White



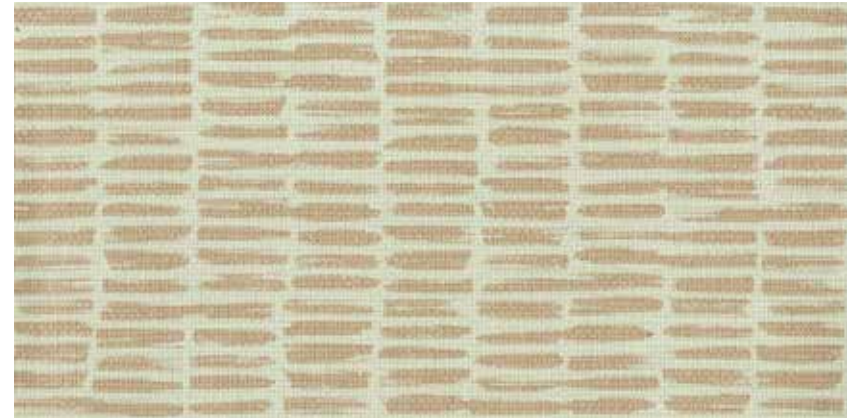
PWG0912 Slick Black



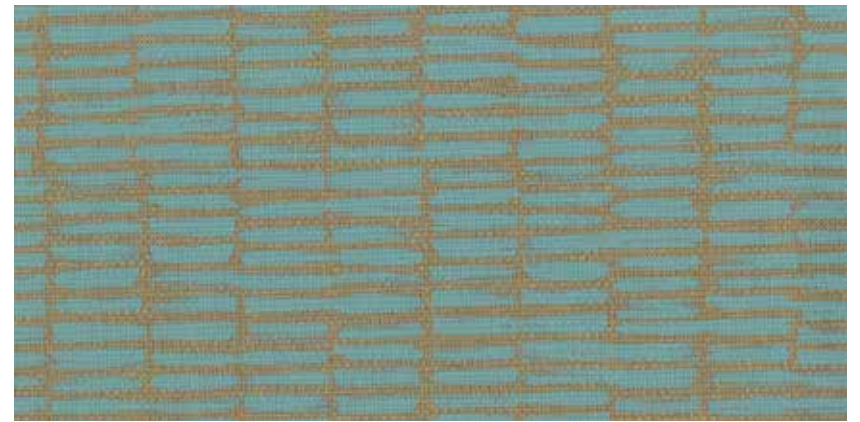
PWG0904 Neutral



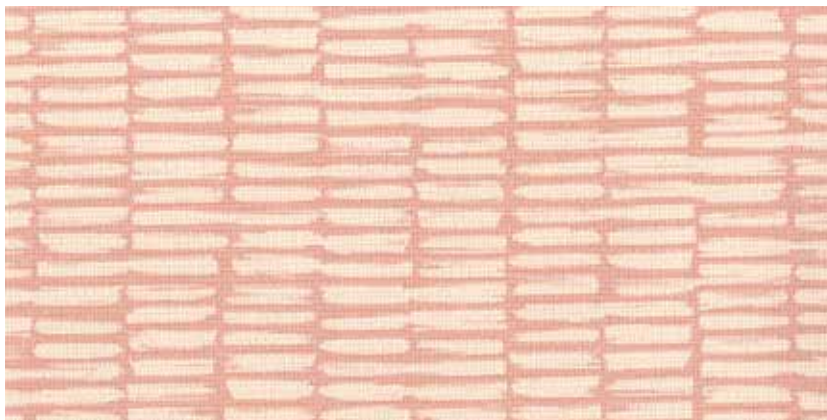
PWG0913 Red All Over



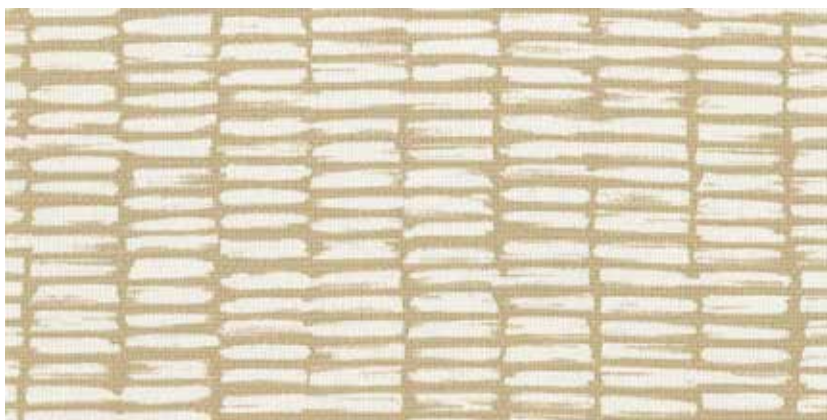
PWG0914 Sage



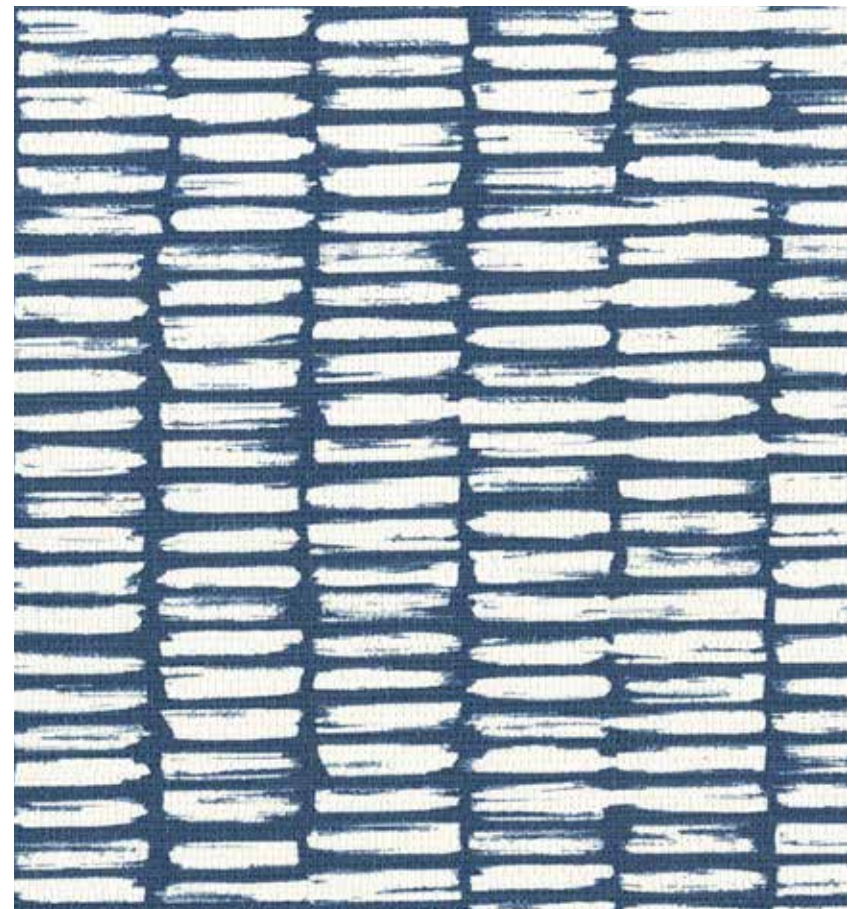
PWG0915 E Green Copper



PWG0916 Glow



PWG0917 Loot



PWG0918 Navy

PWG1012 Sand Dune



SPECIFICATIONS & PROPERTIES

Weight: 20 oz. PLY/620 G/PLM 13.3 oz. PSY/451 G/PSM
Width: 54" (137cm)
Backing: Osnaburg
Match: Straight / Random

Custom colors, weights, widths and microventing are available.

ENVIRONMENTAL & HEALTH

- 10% recycled content (varied blend of pre-consumerand remanufactured material)
- Certified to NSF/ANSI 342 Sustainability Assessment
- Meets California Section 01350 IAQ test requirements for wallcovering
- Can contribute to LEED EQ 4.1 for low-emitting materials, adhesives, and sealants, if used the low VOC adhesives
- Can contribute to LEED MR 5.1 for regional materials



PWG1001 Soft Satin



PWG1002 Gravel Grey



PWG1003 Lily White



PWG1004 Silver Sheen



PWG1005 Elephant Tusk



PWG1006 Abalone



PWG1007 Denim Wash



PWG1008 Smokey Mink



PWG1009 Morning Sky



PWG1010 Hint Of Mint



PWG1011 Misty Rose



PWG1012 Sand Dune

PWG1007 Denim Wash





PWG1013 Golden Plum



PWG1014 Deep Sea



PWG1015 Desert Blush



PWG1016 Wild Orchid



PWG1017 Mermaid Green



PWG1018 Bermuda Blue



PWG1019 Mocha Glint



PWG1020 Black Horizon



PWG1021 Pale Pear



PWG1022 Warm Taupe

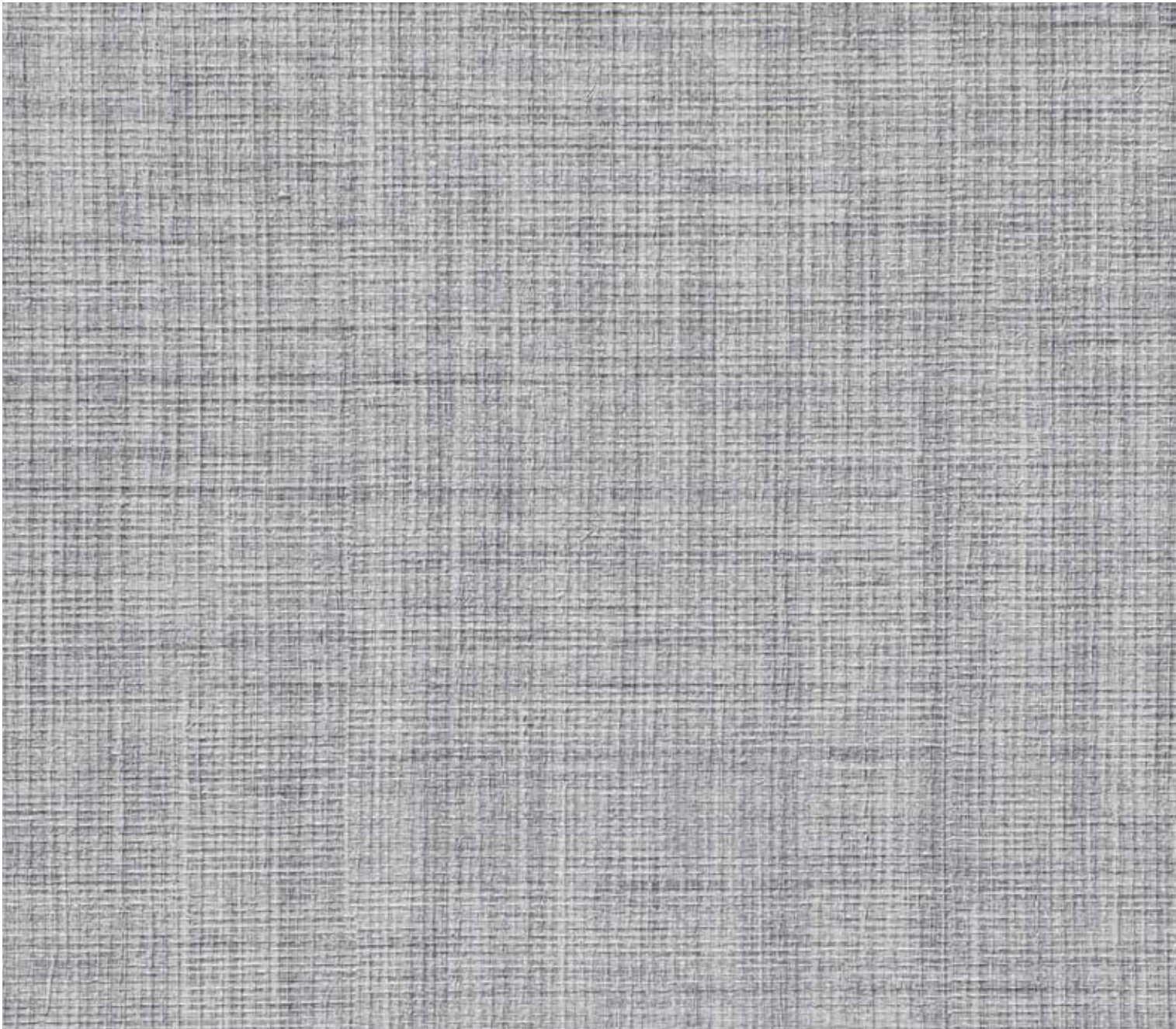


PWG1023 Charming Charcoal



PWG1024 Wrought Iron

PWG1105 Shiny Overalls



SPECIFICATIONS & PROPERTIES

Weight: 20 oz. PLY/620 G/PLM 13.3 oz. PSY/451 G/PSM
Width: 54" (137cm)
Backing: Osnaburg
Match: Reverse / Random

Custom colors, weights, widths and microventing are available.

ENVIRONMENTAL & HEALTH

- 10% recycled content (varied blend of pre-consumer and remanufactured material)
- Certified to NSF/ANSI 342 Sustainability Assessment
- Meets California Section 01350 IAQ test requirements for wallcovering
- Complies with USGBC LEED v4 Criteria, under Indoor Environmental Quality (CDPH/EHLB/Standard Method Version 1.1, 2010)



PWG1117 Blue Jeans



PWG1101 Crisp White



PWG1102 Light Fade



PWG1103 Pedal Pushers



PWG1104 Stone Wash



PWG1105 Shiny Overalls



PWG1106 Dusty Rose



PWG1107 Clean Trousers



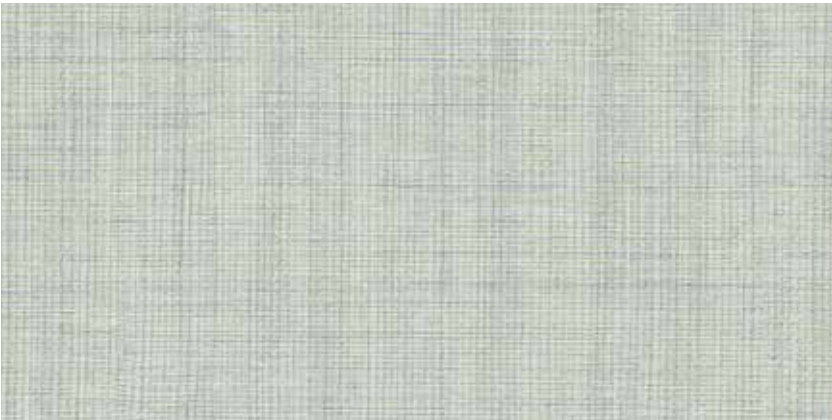
PWG1108 Tricot Corduroys



PWG1109 Soft Khakis



PWG1110 Bloomers



PWG1111 Dungarees



PWG1112 Capri Blush



PWG1113 Bermuda Shorts



PWG1114 Cognac Wranglers



PWG1115 Chambray



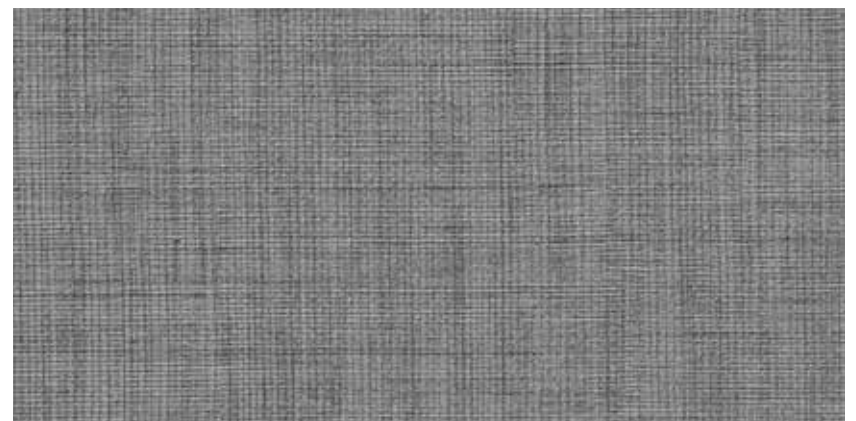
PWG1116 Vintage Cords



PWG1117 Blue Jeans



PWG1118 Desert Rock



PWG1119 Grey Romper



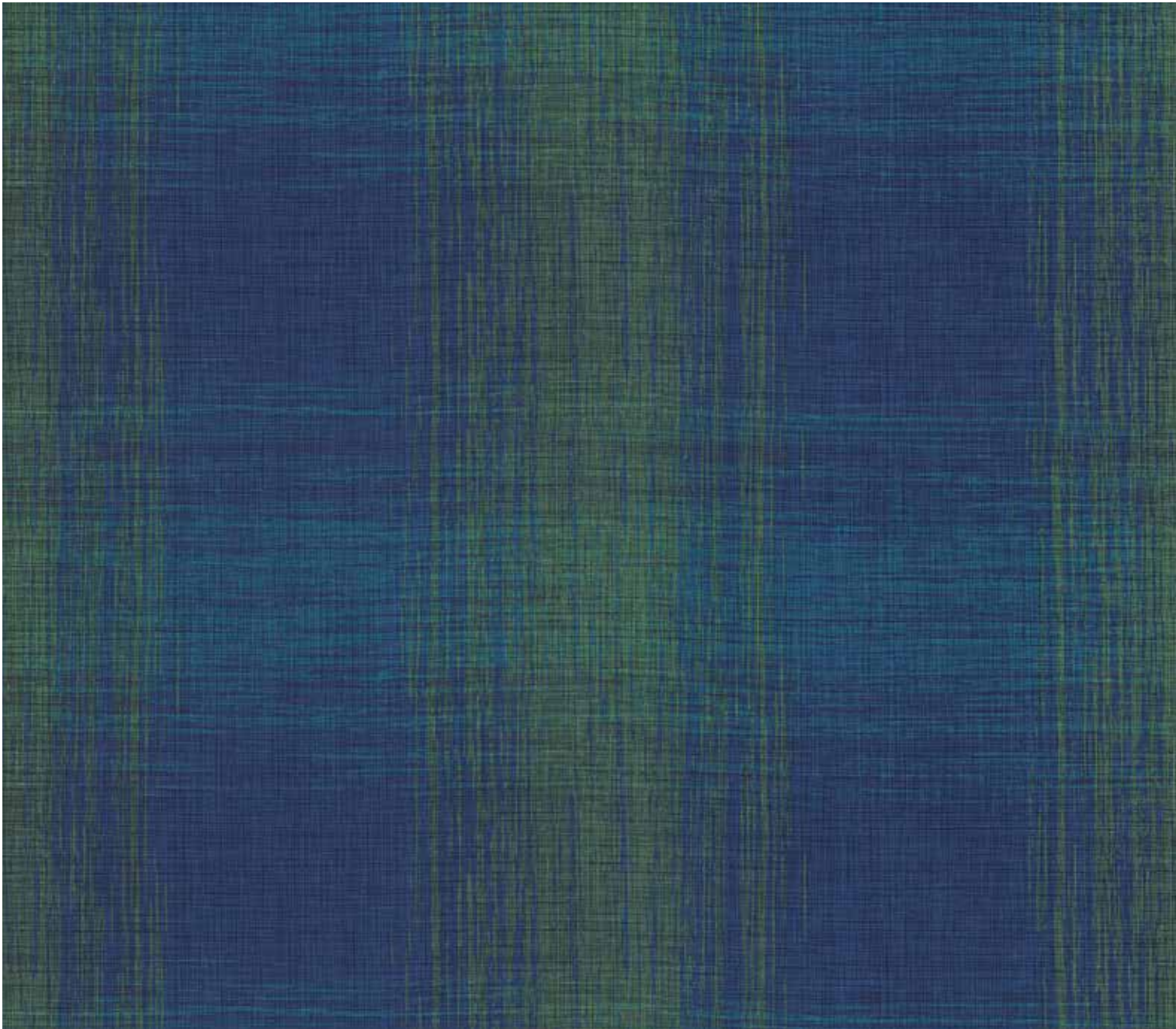
PWG1120 Bell Bottoms



PWG1121 Black Slacks

FRESH PLAID

PWG1205 Cobalt Navy



SPECIFICATIONS & PROPERTIES

Weight: 20 oz. PLY/620 G/PLM 13.3 oz. PSY/451 G/PSM
Width: 52" (132cm)
Backing: Osnaburg
Match: Straight
Pattern Repeat: 24" h x 52" w

Custom colors, weights, widths and microventing are available.



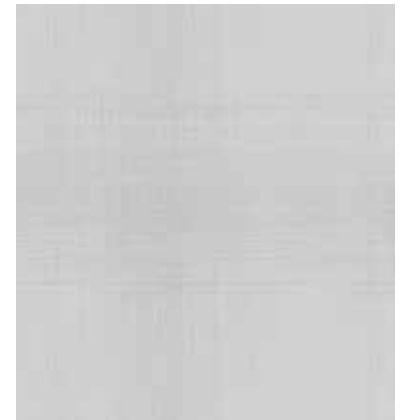
PWG1206 Blackboard



PWG1201 Oatmeal



PWG1202 Glass



PWG1203 Purity



PWG1204 Cool Grey



PWG1205 Cobalt Navy



PWG1206 Blackboard

PWG1312 Dusk Duet



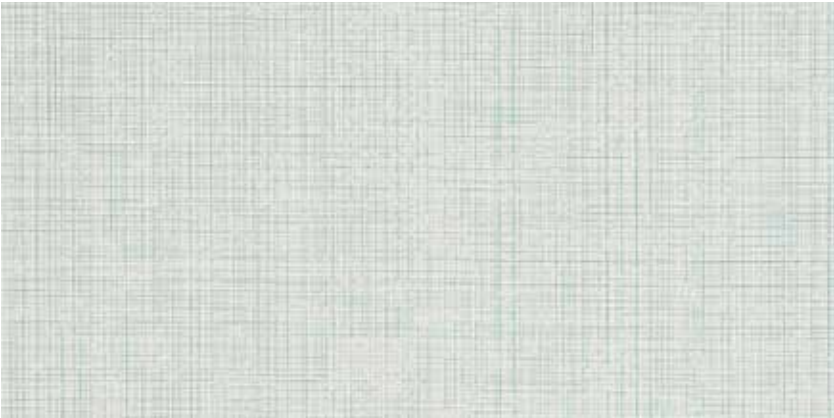
SPECIFICATIONS & PROPERTIES

Weight:	20 oz. PLY/620 G/PLM 13.3 oz. PSY/451 G/PSM
Width:	54" (137cm)
Backing:	Osnaburg
Match:	Straight / Random

Custom colors, weights, widths and microventing are available.



PWG1301 White Lights



PWG1302 Aqua Arabesque



PWG1303 Silver Song



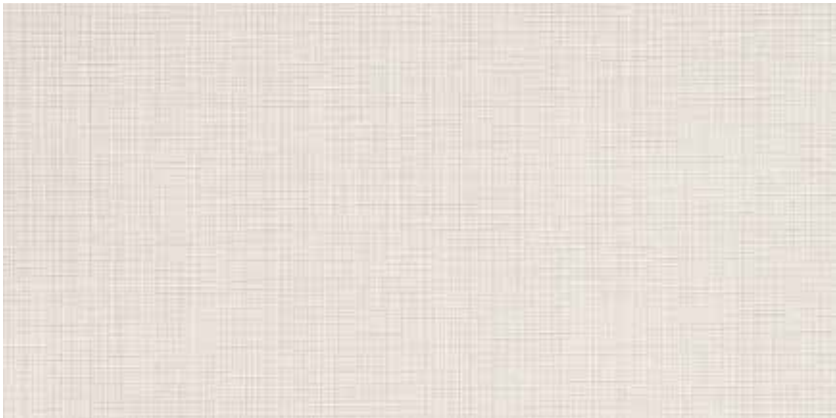
PWG1304 Greige Tempo



PWG1305 Ballet Slipper



PWG1306 Venue Grey



PWG1307 Chiffon Tutu



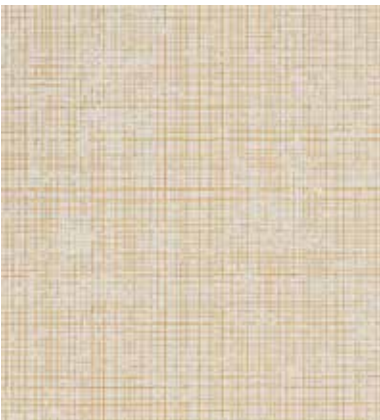
PWG1308 Showtime Gold



PWG1309 Ballroom Beige



PWG1310 Neutral Pose



PWG1311 Mustard Leap



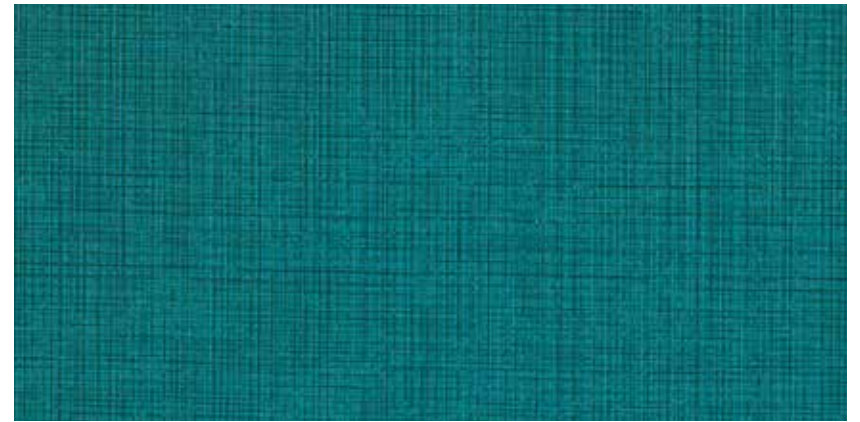
PWG1312 Dusk Duet

PWG1323 Classical Solo





PWG1313 Pink Headliner



PWG1314 Superstar Teal



PWG1315 Moulin Rouge



PWG1316 Cabernet Cameo



PWG1317 On Cue Blue



PWG1318 Sapphire Solo



PWG1319 Box Office Bronze



PWG1320 Moondance



PWG1321 Monologue Mink



PWG1322 On Tour Taupe

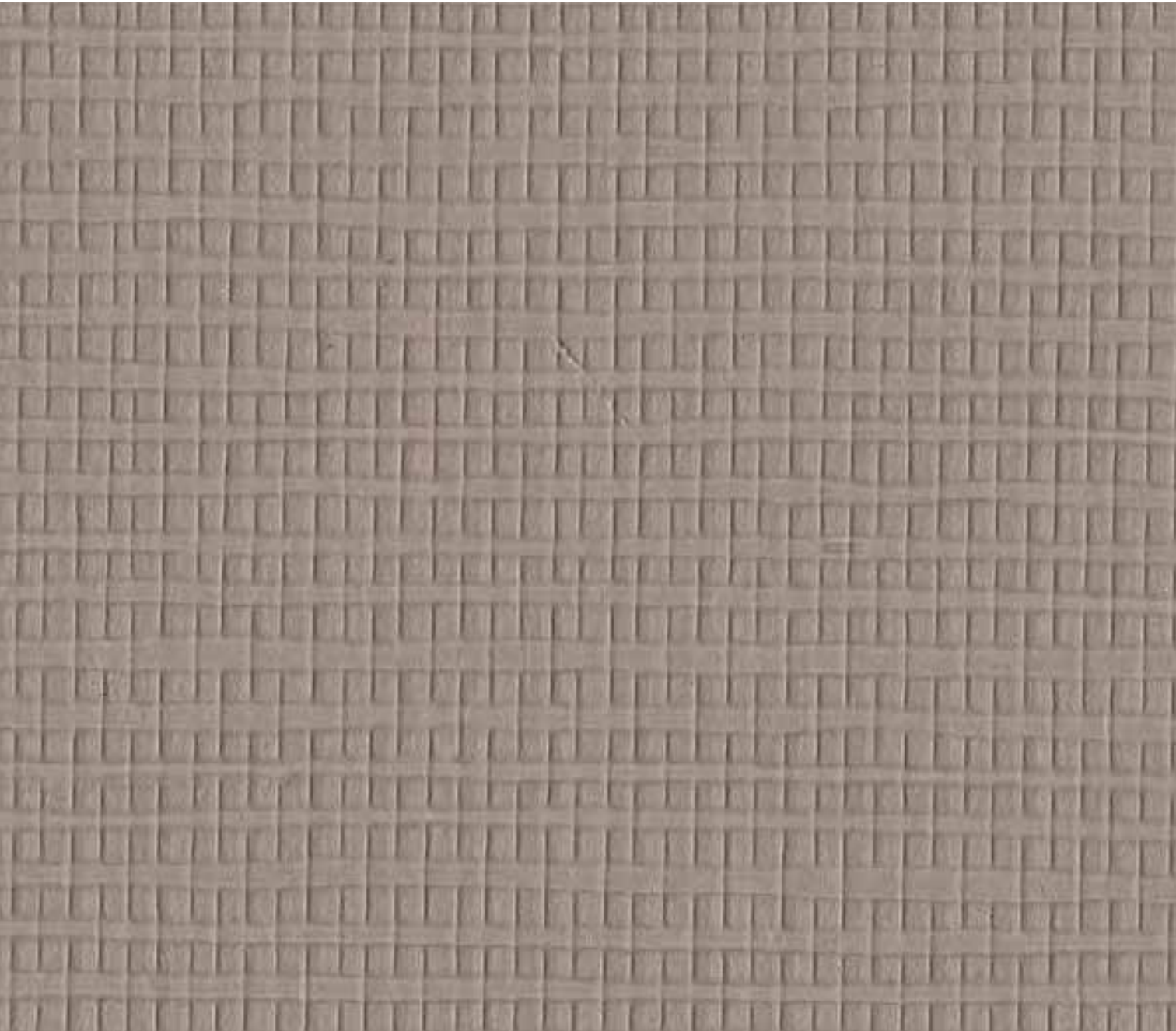


PWG1323 Classical Charcoal



PWG1324 Velvet Rope

PWG1412 Matte Taupe



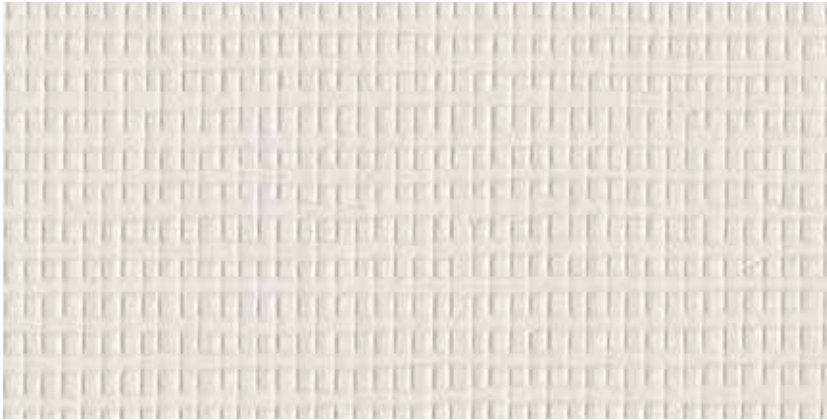
SPECIFICATIONS & PROPERTIES

Weight: 20 oz. PLY/620 G/PLM 13.3 oz. PSY/451 G/PSM
Width: 54" (137cm)
Backing: Non-woven
Match: Straight / Random

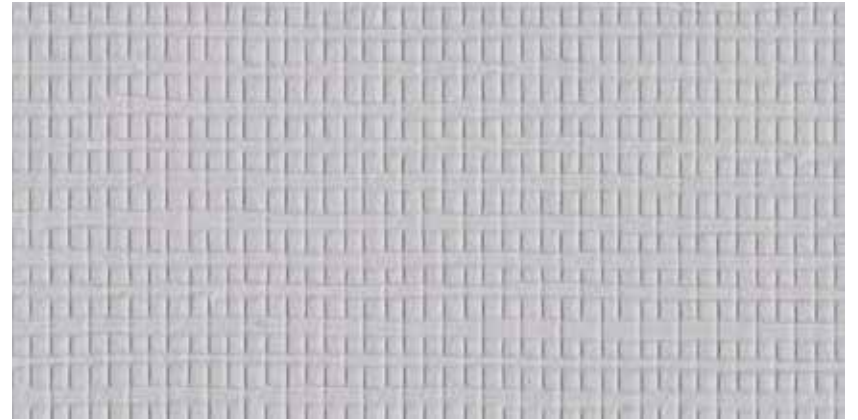
Custom colors, weights, widths and microventing are available.

ENVIRONMENTAL & HEALTH

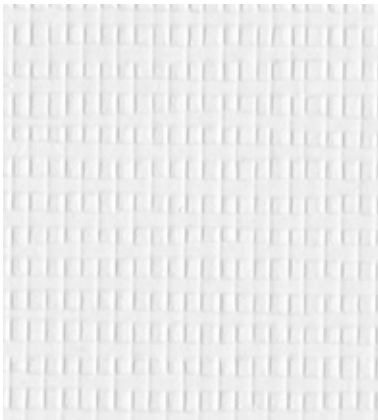
- 10% recycled content (varied blend of pre-consumerand remanufactured material)
- Certified to NSF/ANSI 342 Sustainability Assessment
- Meets California Section 01350 IAQ test requirements for wallcovering
- Complies with USGBC LEED v4 Criteria, under Indoor Environmental Quality (CDPH/EHLB/Standard Method Version 1.1, 2010)
- Can contribute to LEED EQ 4.1 for low-emitting materials, adhesives, and sealants, if used with low VOC adhesives
- Can contribute to LEED MR 5.1 for regional materials



PWG1401 Matte Bone



PWG1402 Matte Grey



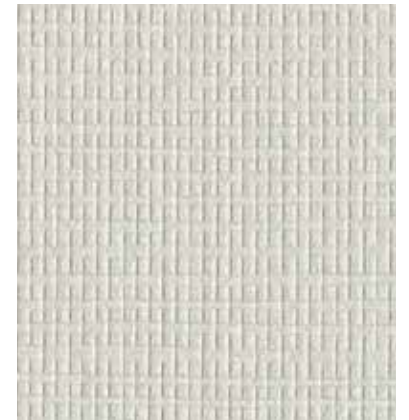
PWG1403 Matte White



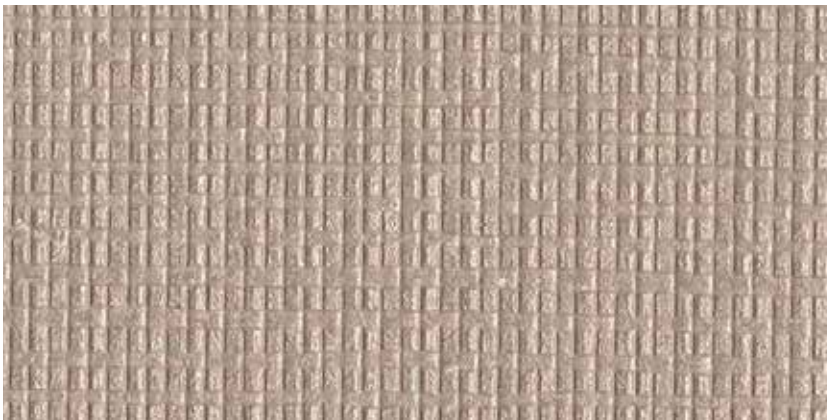
PWG1404 Matte Buff



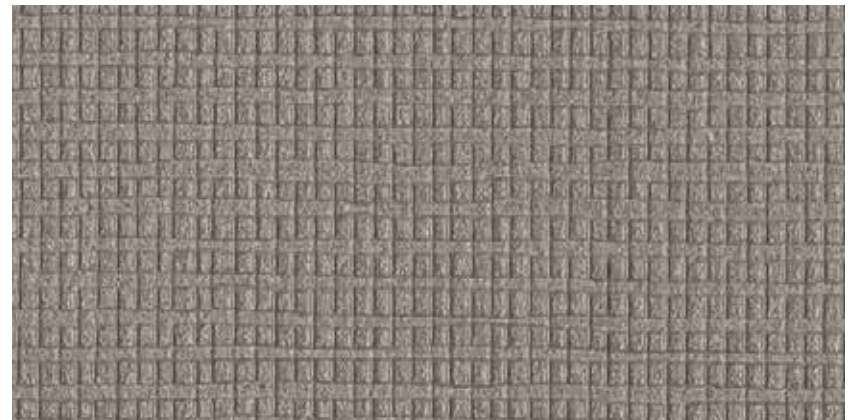
PWG1405 Pearl



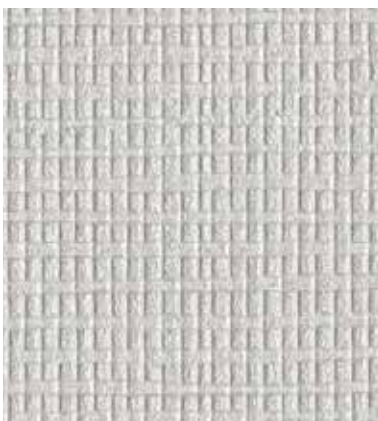
PWG1406 Oyster



PWG1407 Treasure



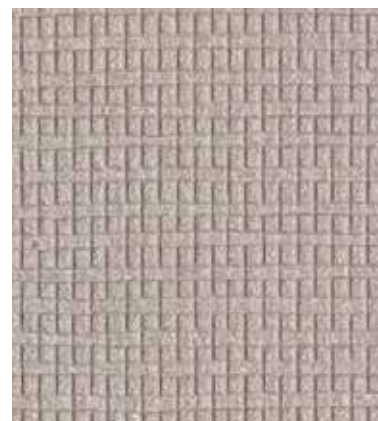
PWG1408 Bronzed



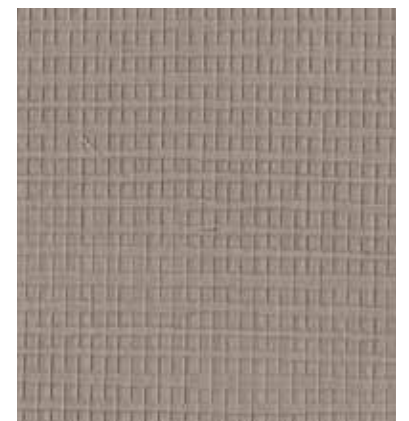
PWG1409 Platinum



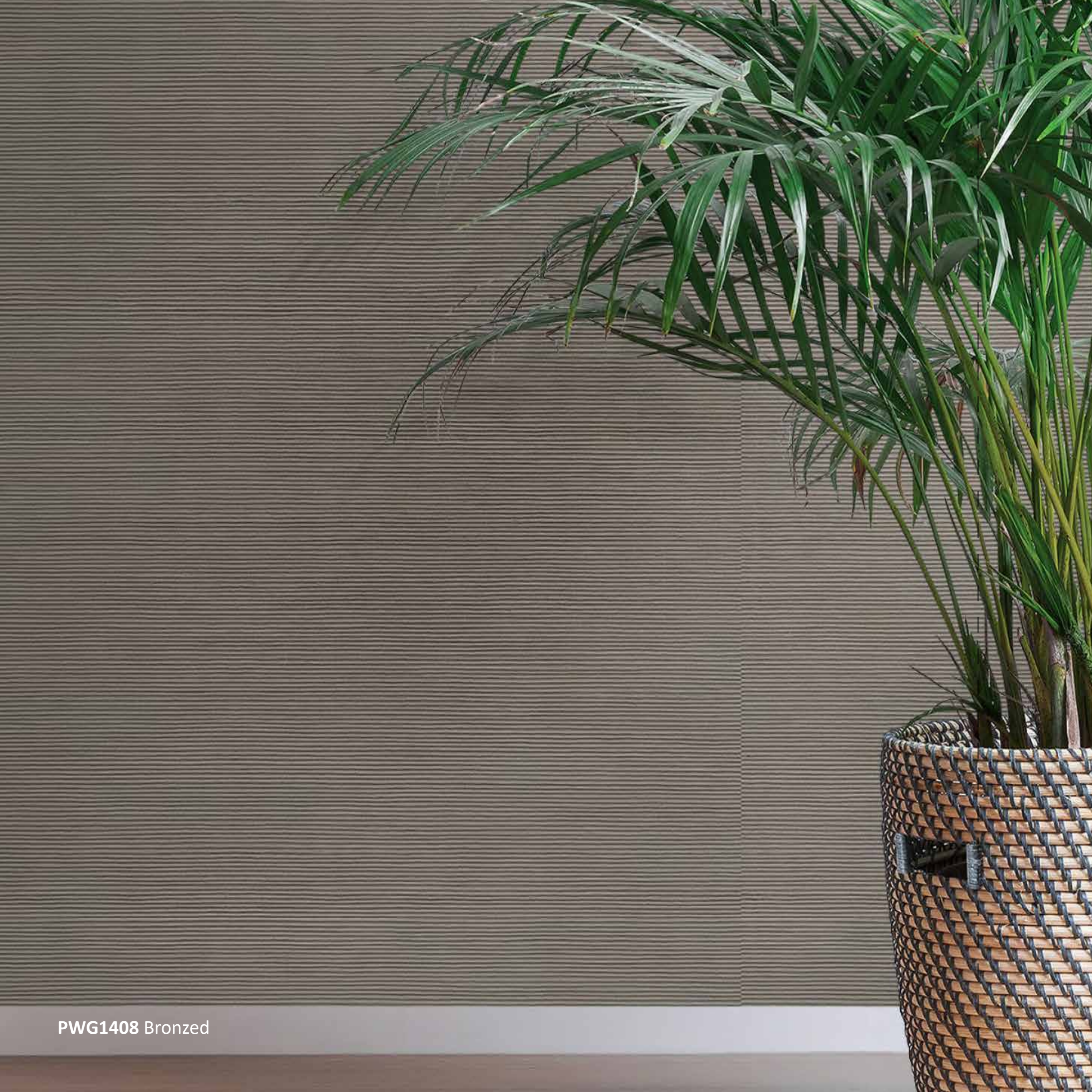
PWG1410 Matte Beige



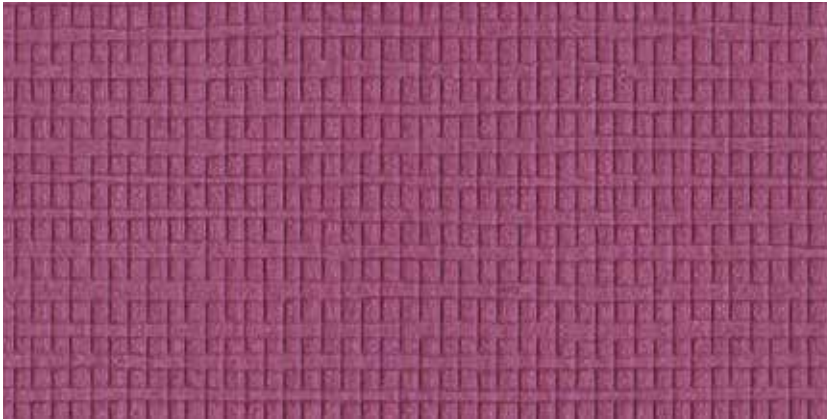
PWG1411 Warm Nickel



PWG1412 Matte Taupe



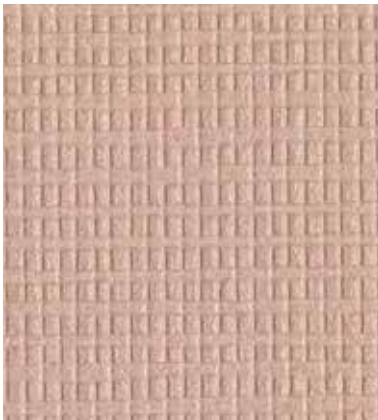
PWG1408 Bronzed



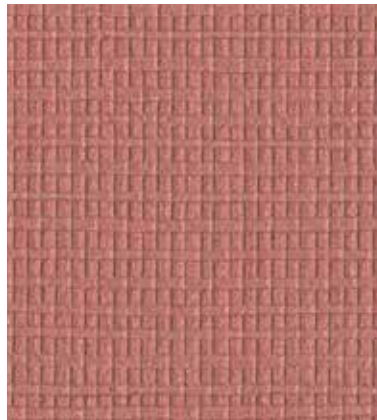
PWG1413 Claret



PWG1414 Matte Veridian



PWG1415 Blush



PWG1416 Glow



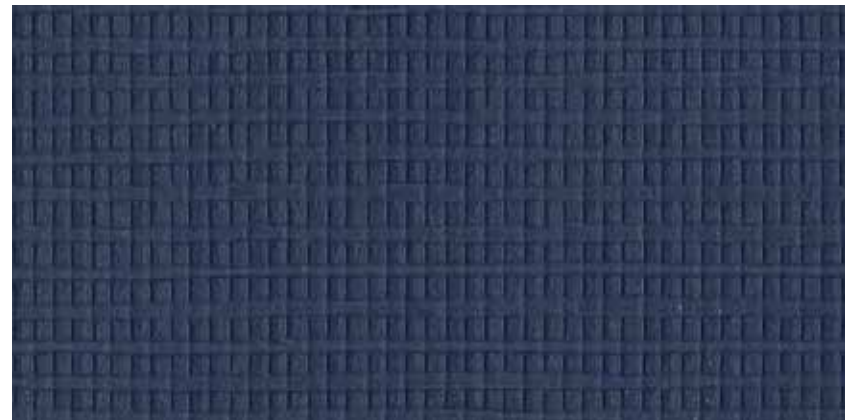
PWG1417 Matte Mint



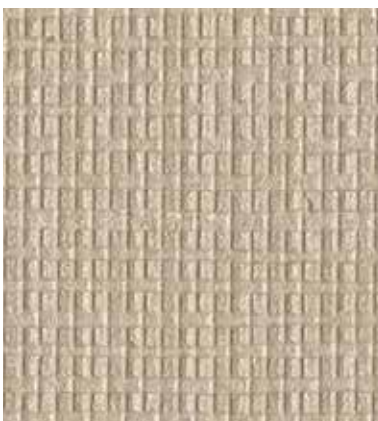
PWG1418 Emerald



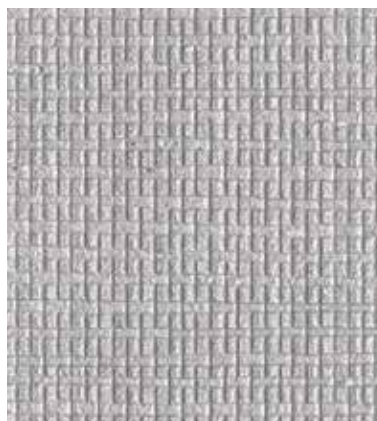
PWG1419 Gold Rush



PWG1420 Matte Navy



PWG1421 Pale Gold



PWG1422 Foiled



PWG1423 Tawny



PWG1424 Matte Black

HULA HANA



PWG1430 Gold Rush



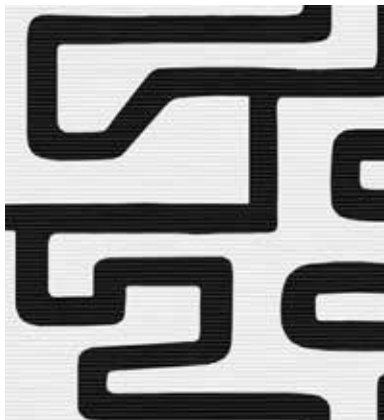
PWG1425 Matte White



PWG1426 Platinum



PWG1427 Pearl



PWG1428 Matte Black



PWG1429 Pale Gold



PWG1430 Gold Rush



PWG1431 Matte Mint

SPECIFICATIONS & PROPERTIES

Weight: 20 oz. PLY
Width: 54"
Backing: Non-woven
Match: Straight
Pattern Repeat: 18" h x 54" w

HULA BIG HANA



PWG1432 Matte White



PWG1433 Pearl



PWG1434 Matte Black



PWG1435 Bronzed



PWG1436 Pale Gold



PWG1437 Gold Rush



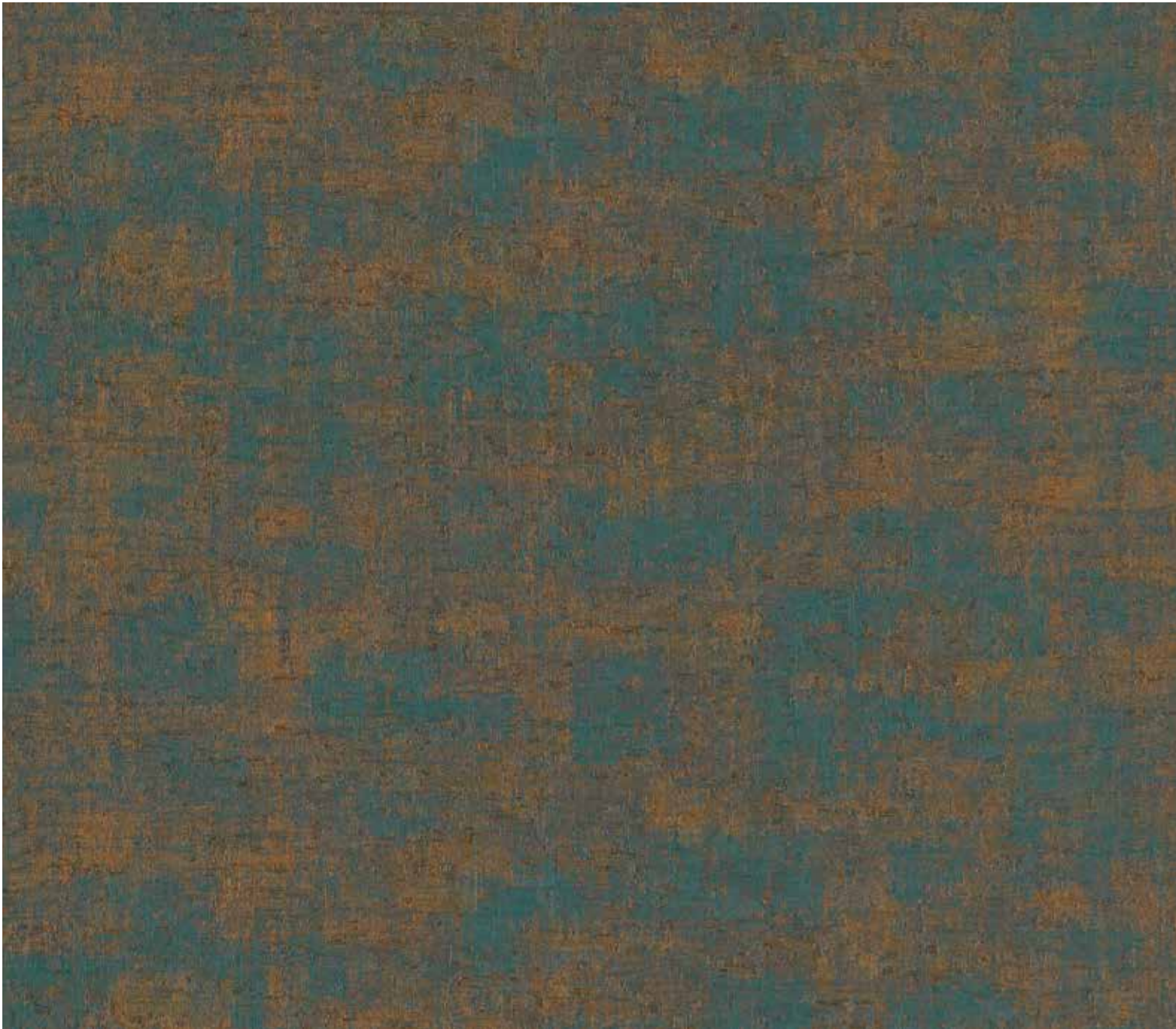
PWG1438 Blush

SPECIFICATIONS & PROPERTIES

Weight: 20 oz. PLY
Width: 52"
Backing: Non-woven
Match: Straight
Pattern Repeat: 24" h x 52" w

ROLLIN' STONE

PWG1504 Jumpin Jack Flash



SPECIFICATIONS & PROPERTIES

Weight: 20 oz. PLY/620 G/PLM 13.3 oz. PSY/451 G/PSM
Width: 54" (137cm)
Backing: Osnaburg
Match: Reverse / Random

Custom colors, weights, widths and microventing are available.

ENVIRONMENTAL & HEALTH

- 10% recycled content (varied blend of pre-consumerand remanufactured material)
- Certified to NSF/ANSI 342 Sustainability Assessment
- Meets California Section 01350 IAQ test requirements for wallcovering
- Complies with USGBC LEED v4 Criteria, under Indoor Environmental Quality (CDPH/EHLB/Standard Method Version 1.1, 2010)



PWG1501 Shine A Light



PWG1501 Shine A Light



PWG1502 Standing In The Shadow



PWG1503 Rocks Off



PWG1504 Jumpin Jack Flash



PWG1505 Get Off My Cloud



PWG1506 Midnight Rambler



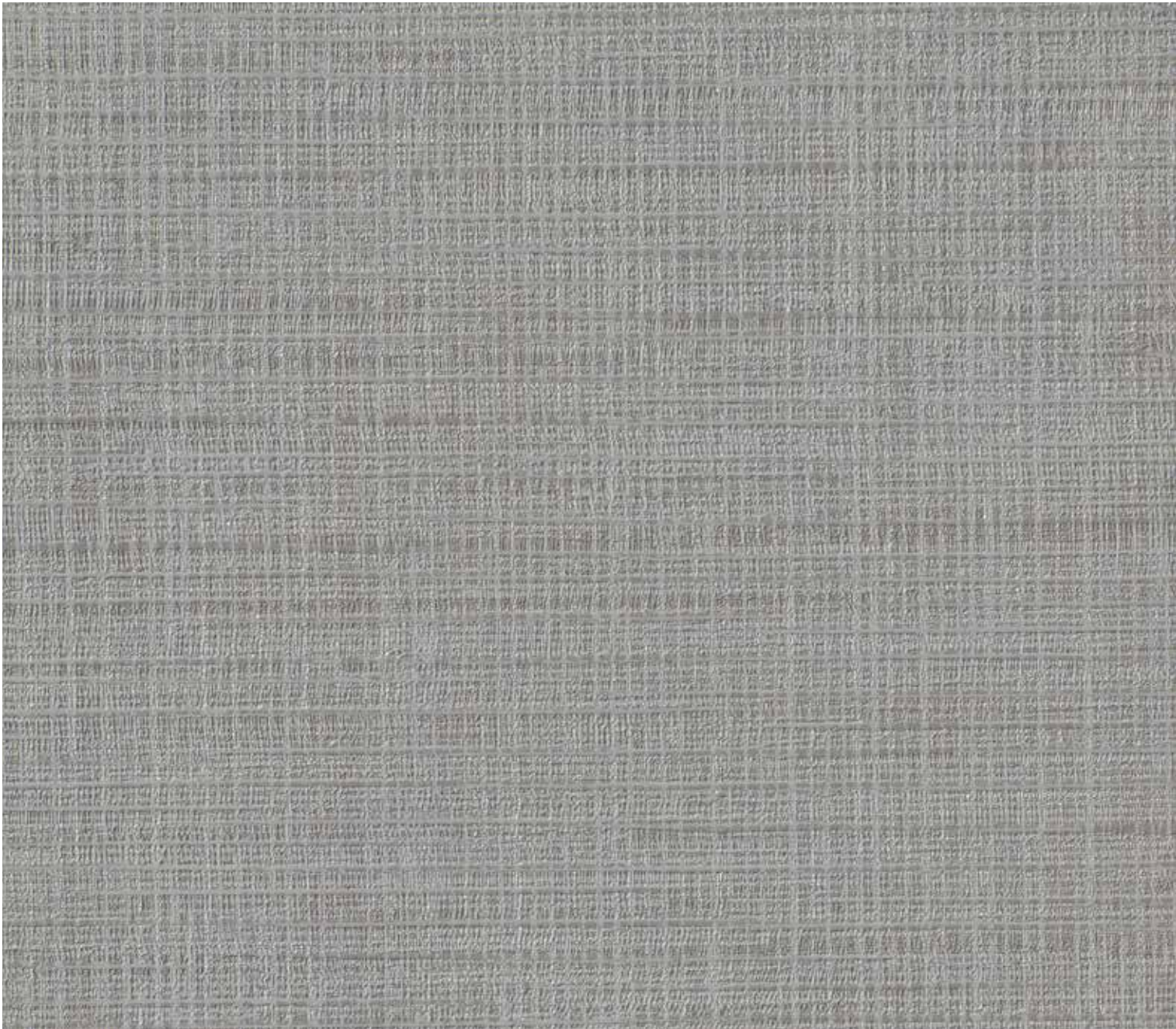
PWG1507 Heart Of Stone



PWG1508 Paint It Black

FRESH MESH

PWG1612 Cool Grey



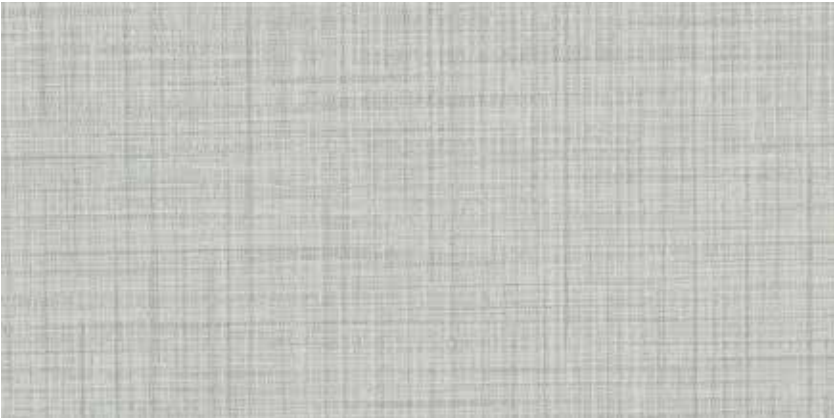
SPECIFICATIONS & PROPERTIES

Weight: 20 oz. PLY/620 G/PLM 13.3 oz. PSY/451 G/PSM
Width: 54" (137cm)
Backing: Osnaburg
Match: Reverse / Random

Custom colors, weights, widths and microventing are available.



PWG1601 Bone



PWG1602 Pale Ash



PWG1603 Purity



PWG1604 Pearl Grey



PWG1605 Classic Grey



PWG1606 Warm Grey



PWG1607 Iron



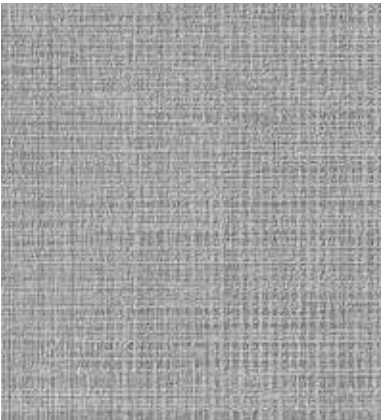
PWG1608 Charcoal



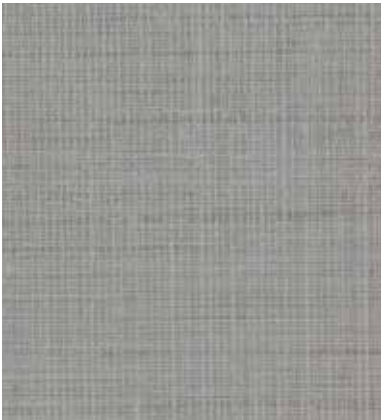
PWG1609 Oatmeal



PWG1610 Neutral Ground



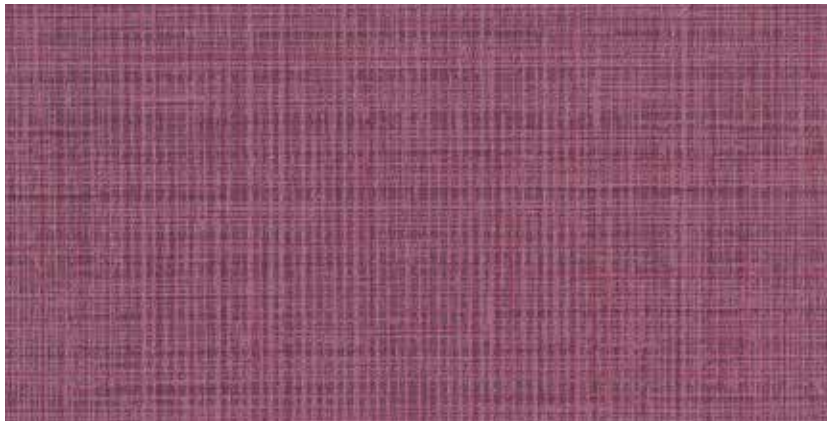
PWG1611 Silver



PWG1612 Cool Grey



PWG1624 Blackboard



PWG1613 Sugared Plum



PWG1614 Emerald



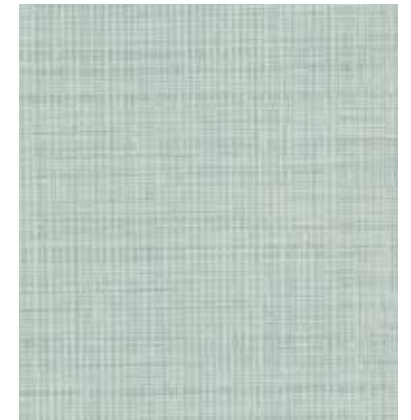
PWG1615 Nude



PWG1616 Harissa



PWG1617 Glass



PWG1618 Aqua



PWG1619 Gold



PWG1620 Cobalt Navy



PWG1621 Heavy Cream



PWG1622 Sand



PWG1623 True Navy



PWG1624 Blackboard

PWG1713 Mahogany Guitar



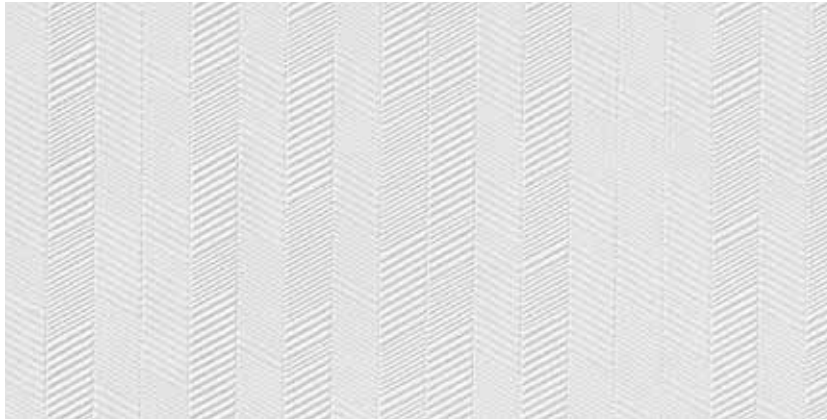
SPECIFICATIONS & PROPERTIES

Weight: 20 oz. PLY/620 G/PLM 13.3 oz. PSY/451 G/PSM
Width: 54" (137cm)
Backing: Osnaburg
Match: Reverse / Random

Custom colors, weights, widths and microventing are available.

ENVIRONMENTAL & HEALTH

- 10% recycled content (varied blend of pre-consumer and remanufactured material)
- Certified to NSF/ANSI 342 Sustainability Assessment
- Meets California Section 01350 IAQ test requirements for wallcovering
- Complies with USGBC LEED v4 Criteria, under Indoor Environmental Quality (CDPH/EHLB/Standard Method Version 1.1, 2010)



PWG1701 Letter White



PWG1702 ivory Lust



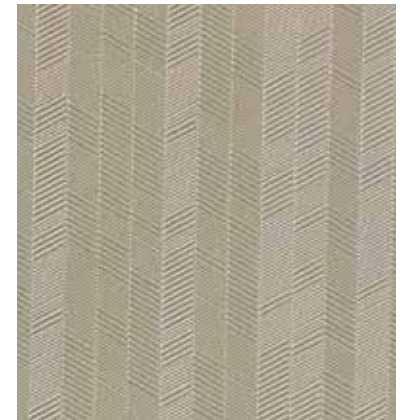
PWG1703 Creme De Peche



PWG1704 Perry Pink



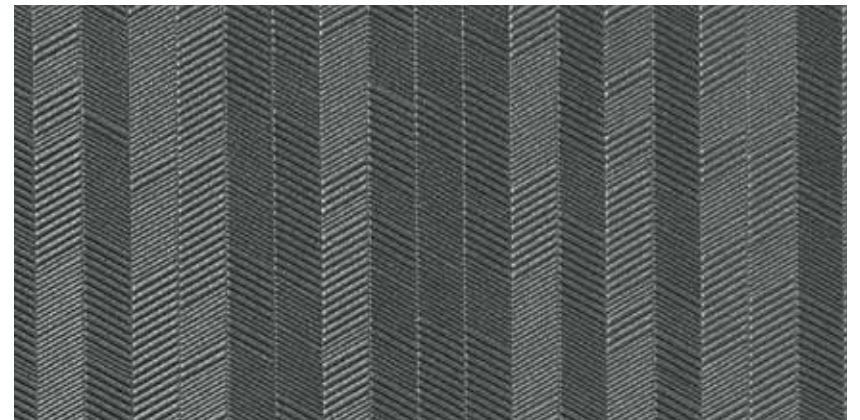
PWG1705 Starlike



PWG1706 Neutral Attraction



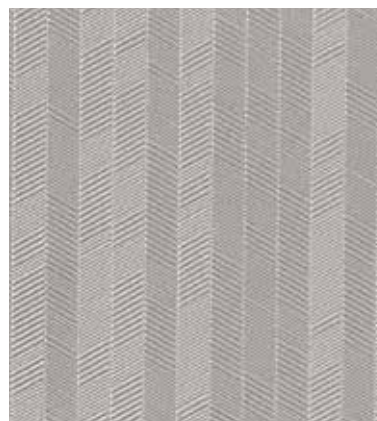
PWG1707 Bad To The Bone



PWG1708 Grey Glory



PWG1709 Reigning Grey



PWG170 Silver Mirrors



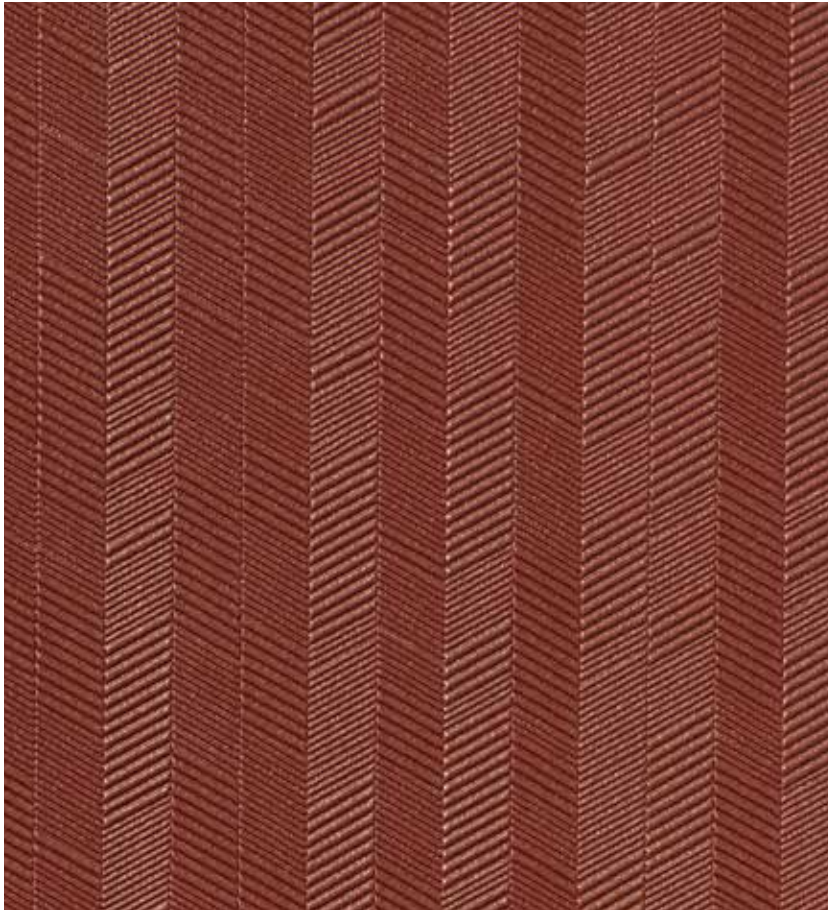
PWG1711 Taupe Crazy



PWG1712 Flash Of Black

PWG1714 Showy Peach





PWG1713 Mahogany Guitar



PWG1714 Showy Peach



PWG1715 Rust Royalty



PWG1716 Adams Apple



PWG1717 Tyler Teal



PWG1718 Cobalt Crest

WOODN'T IT BE NICE

PWG1802 Poplar



SPECIFICATIONS & PROPERTIES

Weight: 20 oz. PLY/620 G/PLM 13.3 oz. PSY/451 G/PSM
Width: 54" (137cm)
Backing: Osnaburg
Match: Reverse / Random

Custom colors, weights, widths and microventing are available.

ENVIRONMENTAL & HEALTH

- 10% recycled content (varied blend of pre-consumerand remanufactured material)
- Certified to NSF/ANSI 342 Sustainability Assessment
- Meets California Section 01350 IAQ test requirements for wallcovering
- Can contribute to LEED EQ 4.1 for low-emitting materials, adhesives, and sealants, if used the low VOC adhesives
- Can contribute to LEED MR 5.1 for regional materials



PWG1801 White Ash



PWG1802 Poplar



PWG1803 Birch



PWG1804 Rosewood



PWG1805 Aspen



PWG1806 Sumac



PWG1807 Spruce



PWG1808 Yakisugi Black



PWG1801 White Ash



PWG1809 Elm



PWG1810 Hickory



PWG1811 Maple



PWG1812 Cherry



PWG1813 Butternut



PWG1814 Walnut



PWG1815 Teak



PWG1816 Mahogany

PREMIERWALL (INDEX)

GARNET

Page	Pattern No	Pattern Name	Weight (oz)	Pattern Repeat (In)		Pattern Match	Backing	Roll Size
				Horizontal	Vertical			
1 - 4	PWG0101 - PWG0116	Sherwood	20	0	0	Reverse Random	Osnaburg	54" x 30yds
5 - 8	PWG0201 - PWG0216	Make It Mylar	20	0	0	Reverse Random	Osnaburg	50" x 30yds
9 - 10	PWG0301	On Pointe	20	52	18	Straight Match	Non-Woven	52" x 30yds
11 - 14	PWG0401 - PWG0412	On Pointe Petite	20	26	18	Straight Match	Non-Woven	52" x 30yds
15 - 16	PWG0501 - PWG0506	Shape Shift	20	52	24	Straight Random	Osnaburg	52" x 30yds
17 - 18	PWG0601 - PWG0608	Plaster Prelude	20	52	0	Reverse Random	Osnaburg	52" x 30yds
19 - 20	PWG0701 - PWG0708	Plaster Primo	20	54	0	Reverse Random	Osnaburg	54" x 30yds
21 - 24	PWG0801 - PWG0824	Prima Silk	20	0	0	Reverse Random	Osnaburg	54" x 30yds
25 - 28	PWG0901 - PWG0918	Dash-ing	20	52	18	Reverse Random	Osnaburg	52" x 30yds
29 - 32	PWG1001 - PWG1024	Hide & Silk	20	0	0	Straight Random	Osnaburg	54" x 30yds
33 - 36	PWG1101 - PWG1121	Grateful Denim	20	0	0	Reverse Random	Osnaburg	54" x 30yds
37 - 38	PWG1201 - PWG1206	Fresh Plaid	20	52	24	Straight Match	Osnaburg	52" x 30yds
39 - 42	PWG1301 - PWG1324	On Stage	20	0	0	Straight Random	Osnaburg	54" x 30yds
43 - 46	PWG1401 - PWG1424	Hula	20	54	0	Straight Random	Non-Woven	54" x 30yds
47	PWG1425 - PWG1431	Hula Hana	20	54	18	Straight Match	Non-Woven	54" x 30yds
48	PWG1432 - PWG1438	Hula Big Hana	20	52	24	Straight Match	Non-Woven	52" x 30yds
49 - 50	PWG1501 - PWG1508	Rollin Stone	20	0	0	Reverse Random	Osnaburg	54" x 30yds
51 - 54	PWG1601 - PWG1624	Fresh Mesh	20	0	0	Reverse Random	Osnaburg	54" x 30yds
55 - 58	PWG1701 - PWG1718	Arrow Smith	20	0	0	Reverse Random	Osnaburg	54" x 30yds
59 - 62	PWG1801 - PWG1816	Woodn't It Be Nice	20	0	0	Reverse Random	Osnaburg	54" x 30yds

Installation and Maintenance Guidelines

BEFORE YOU BEGIN

Examine the material carefully to ensure that the pattern, colour, and quality are satisfactory and as ordered. Check that the quantity and dimensions match the required specifications, prior to cutting. In the event that any discrepancies are found, STOP and contact Goodrich Global before proceeding.

We recommend that the wall moisture content does not exceed 4% using a reputable moisture meter, and that active moisture infiltration, condensation, and/or accumulation - particularly in warm, humid climates - is not present. If walls show mould, mildew or visible moisture damage, or if moisture content exceeds recommendations, do not proceed with installation until the condition has been fully corrected under the direction of a qualified professional. Goodrich Global will not be responsible for any performance or quality issues if moisture problems are not addressed before or following installation.

HANGING GUIDELINES

Wallcovering rolls are numbered consecutively and should be cut and installed in reverse sequence, starting with the highest numbered roll. All strips should be hung in sequence as they are cut from the roll, using full widths of material, whenever possible. Install the wallcovering under permanent lighting conditions to evaluate colour and texture uniformity.

When hanging non-reversible or matching patterns, measure the wall height, allowing for pattern match, add 4", and table trim using a straight edge to ensure alignment across seams. Large, dominant pattern repeats require more careful planning as far as starting point, ceiling line, chair rails, door/window headers, etc. Patterns are meant to match at eye level and may run off slightly at the top and bottom of the wall. When hanging textured or random-match patterns, reverse hang alternate strips for a more uniform appearance; overlap and double cut, being careful not to score the wall. If the pattern effect is not acceptable after three strips are hung, re-hang strip #2 without reversing.

If any defect, colour variation, or unacceptable pattern effect is noticeable after three panels are cut and hung, STOP and contact Goodrich Global immediately. Goodrich Global cannot accept any claims on labour or material after more than three lengths have been installed.

ADHESIVE APPLICATION

Apply a uniform coat of a premixed vinyl wallcovering adhesive to the back of the material using a short-napped paint roller or stiff bristle brush (a pasting machine can be used at the installer's discretion). Goodrich WA202 adhesive is recommended for heavyweight vinyl wallcovering. Fold each sheet over and allow up to 10 minutes booking time for the adhesive to penetrate the backing of the lightweight vinyl material (up to 15 minutes for heavyweight vinyl), and to avoid paste drying at the edges.

Goodrich WA202 Wallcovering Adhesive :

- Specially formulated for all types of contract wallcoverings
- Non Hazardous, Non Toxic, Non Flammable, Non-Staining
- Solvent Free and Formaldehyde Free
- VOC is 0.45mg/kg
- Made in England



Complies to :

- ♥ Regulation (EC No 1907/2006)
- ♥ CLP European Regulation (EC) No 1272/2008
- ♥ BS3046/1981



INSTALLATION

Hang the first strip to a plumb line, overlapping the ceiling and baseboard, within 12 minutes of paste application. Use a stiff bristle brush to ensure that the wallcovering makes contact with the wall. A plastic smoother can also be used on non-metallic Vinyls, providing only light pressure is applied (do not use sharp-edged tools). Smooth from the middle to the outside edges, being careful not to stretch the material, and work out all air bubbles. Trim at the ceiling and baseboard with a sharp razor blade. For matched patterns, butt the second strip to the edge of the first and smooth out firmly. When double cutting non-matching patterns, place a 2-3" wide strip behind the seam to avoid scoring the wall. Flatten seams exerting light pressure with a seam roller. Low-adhesive painter's tape can be used to keep the face of the seams clean. Before applying the next strip, trim the top and bottom as with the first panel, and proceed in the same manner around the room.

Avoid cutting narrow widths of material for placement above doors and below windows. Vertical joints should not occur less than six inches from inside or outside corners. When trimming at chair rails and ceilings, always use a broad knife rather than a straight edge. Take extra care in keeping the adhesive off the face of the wallcovering.

Remove excess adhesive immediately with a natural sponge, frequently rinsed in clear, warm water, and dry with a soft, lint free cloth. After installation, the walls and wallcovering should be monitored for potential moisture or vapour infiltration, which must be promptly eliminated.

MAINTENANCE

Most wallcovering is easily cleaned using clear, warm water and mild soap with a natural sponge. A soft cloth or towel should only be used to tamp dry (do not rub). Stubborn stains can be removed with a laundry spot remover or rubbing alcohol. Do not use solvent-based cleaning agents, lacquer thinners, nail polish remover, pine oil, or cleaning agents containing bleach, which may cause discoloration over time.

Note: The above is intended only as a guideline. Wallcovering installations must conform to current hanging instructions included with each shipment. The installer has final responsibility for proper installation and evaluation of jobsite conditions.

GOODRICH SOLUTIONS

WALLCOVERING

237 | GARNET

WITH GOODRICH,

Your habitat becomes

A gallery of

Your **self-expressions;**

A canvas for

Your **creativity;**

A space for


Your **soul;**

A showcase of


Your **taste for life;**

PREMIERWALL

Stay Connected - www.goodrichglobal.com | info@goodrichglobal.com

 /Goodrich.Global.Singapore

 /goodrich_global

 /GoodrichGlobal

 /GoodrichChina

 /GoodrichGlobal

 /goodrichglobal

 /GoodrichHQ

 /Goodrich_Global

SINGAPORE [HQ] | CHINA | HONG KONG (CHINA) | INDIA | INDONESIA | MALAYSIA | MYANMAR | PHILIPPINES | THAILAND | UNITED ARAB EMIRATES | VIETNAM

Copyright © 2022 Goodrich Global. All rights reserved.